

EMULSIFIER, MICROCUTTER & RECOSCREEN PARTS CATALOGUE

Koncept Tech
Global Price
Warranty
- Less 10%*



www.koncepttech.com

Koncept Tech ApS, Industrivej 6, DK-4200 Slagelse, Denmark, Phone: +45 70271410 E-mail: parts@koncepttech.com

All items, parts, and accessories listed on the website of Koncept Tech ApS, are manufactured by Koncept Tech ApS, or manufactured to Koncept Tech ApS, specifications. The names of the original equipment manufacturers referred to on this site, such as but not limited to: Camitech®, Handmann®, K&G®, Krämer + Grebe®, CFS®, GEA®, Karl Schnell®, KS®, Laska®, Palmia®, Petsmo®, Seydelmann®, Simo®, Haarslev®, Weiler®, Mincemaster®, ANCO®, Cozzini®, The Middleby Corporation®, Wollking®, Cornvair®, Auto®, Beehive®, Yeldmaster®, Meatmaker®, Poss®, Townsend®, Lima® etc., are all registered trademarks of their respective companies. All original equipment manufacturer's names are listed as Camitech® type, Handmann® type, K&G® type, Krämer + Grebe® type, CFS® type, Karl Schnell® type, KS® type, Laska® type, Palmia® type, Petsmo® type, Seydelmann® type, Simo® type, Haarslev® type, Weiler® type, Mincemaster® type, ANCO® type, Cozzini® type, Wollking® type, Cornvair® type, Auto® type, Beehive® type, Yeldmaster® type, Meatmaker® type, Poss® type, Townsend® type, Lima® type to indicate that these items are manufactured by Koncept Tech ApS, and not the original equipment manufacturers. Unless specifically stated otherwise, Koncept Tech ApS, has no association or affiliation with any entities/ companies listed.



Follow us on LinkedIn



Follow us on Facebook

Global Price Warranty - Against documented OEM price

Wolfking® – CFS® – GEA® – Krämer & Grebe® – Simo® – Cozzini®

Koncept Tech ApS maintains a global price warranty against documented OEM price (Original Equipment Manufacturer). If, for any, reason our customer can document that the OEM price is cheaper than the quoted price from Koncept Tech, Koncept Tech shall match the documented price PLUS deduct further 10% from the said part price. All prices are quoted Ex works our factory in Denmark. Koncept Tech ApS may reserve the right to sell and deliver 1 (one) part of each part, or set, for parts covered by price warranty per customer.

This price warranty is valid for ALL parts listed in Koncept Tech High Value Parts catalogue, latest version/edition. Please find Koncept Tech Tech High Value Parts catalogue.



www.koncepttech.com

Koncept Tech ApS, Industrivej 6, DK-4200 Slagelse, Denmark, Phone: +45 70271410 E-mail: parts@koncepttech.com

All items, parts, and accessories listed on the website of Koncept Tech ApS, are manufactured by Koncept Tech ApS, or manufactured to Koncept Tech ApS, specifications. The names of the original equipment manufacturers referred to on this site, such as but not limited to: Camitech®, Handtmann®, K&G®, Krämer + Grebe®, CFS®, GEA®, Karl Schnell®, KS®, Laska®, Palmia®, Petsmo®, Seydelmann®, Simo®, Haarslev®, Weiler®, Mincemaster®, ANCO®, Cozzini®, The Middleby Corporation®, Wolfking®, Comvair®, Auto®, Beehive®, Yeldmaster®, Meatmaker®, Poss®, Townsend®, Lima® etc., are all registered trademarks of their respective companies. All original equipment manufacturer's names are listed as Camitech® type, Handtmann® type, K&G® type, Krämer + Grebe® type, CFS® type, Karl Schnell® type, KS® type, Laska® type, Palmia® type, Petsmo® type, Seydelmann® type, Simo® type, Haarslev® type, Weiler® type, Mincemaster® type, ANCO® type, Cozzini® type, Wolfking® type, Comvair® type, Auto® type, Beehive® type, Yeldmaster® type, Meatmaker® type, Poss® type, Townsend® type, Lima® type to indicate that these items are manufactured by Koncept Tech ApS, and not the original equipment manufacturers. Unless specifically stated otherwise, Koncept Tech ApS, has no association or affiliation with any entities/ companies listed.



Follow us on LinkedIn



Follow us on Facebook

List of Contents

Emulsifier Parts for Wolfking®/CFS®/GEA® Emulsifiers:

EcoCutE.225.....	4-23
QuadroCut225/EcoCut E.225.....	24-25

Microcutter Parts for Simo® Microcutters:

MC 200.....	26
MC 250.....	27-35

Mechanical Deboning Machine Parts:

RecoScreen 100 & RecoScreen 20.....	36-37
-------------------------------------	-------



Follow us on LinkedIn



Follow us on Facebook

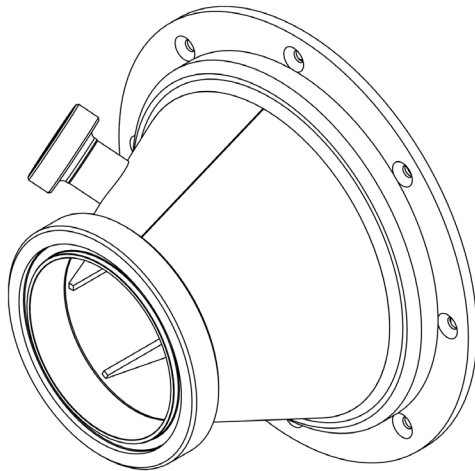
Wolfking® / CFS® / GEA® Emulsifier Parts - EcoCut E.225



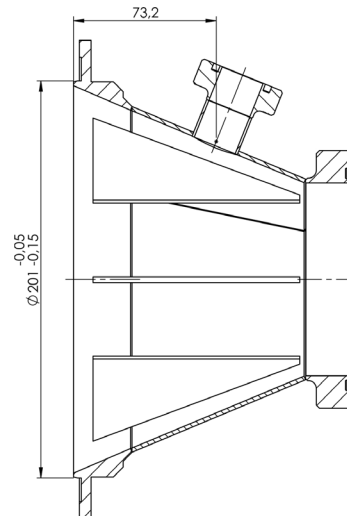
QuadroCut knife housing shown with key for EcoCut E.225
part number



Inlet cone for EcoCut E.225,
part number 50000369888 /369888

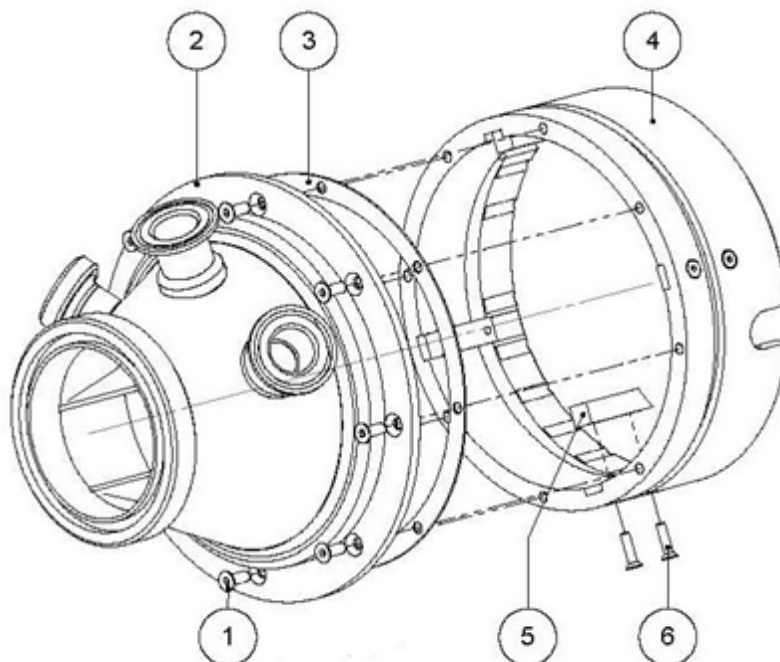


Inlet cone with fitting for pressure for EcoCut E.225.
part number 43-301



Wolfking® / CFS® / GEA® Emulsifier Parts - EcoCut E.225 (Cont.)

Inlet Cone Assembly For EcoCut E.225, Part Number 5000321784



Pos. No	Description	Wolfking® / CFS® EcoCut 225	GEA® EcoCut 225
1	Allen screw flat M6x16 SS	22569	5000022569
2	Inlet cone conical	317563	5000317563
3	Gasket for wear ring	304586	5000304586
4	Wear ring	312793	5000312793
5	Ribbon for wear ring	304579	5000304579
6	Allen screw flat M5x20 SS	3276	5000003276

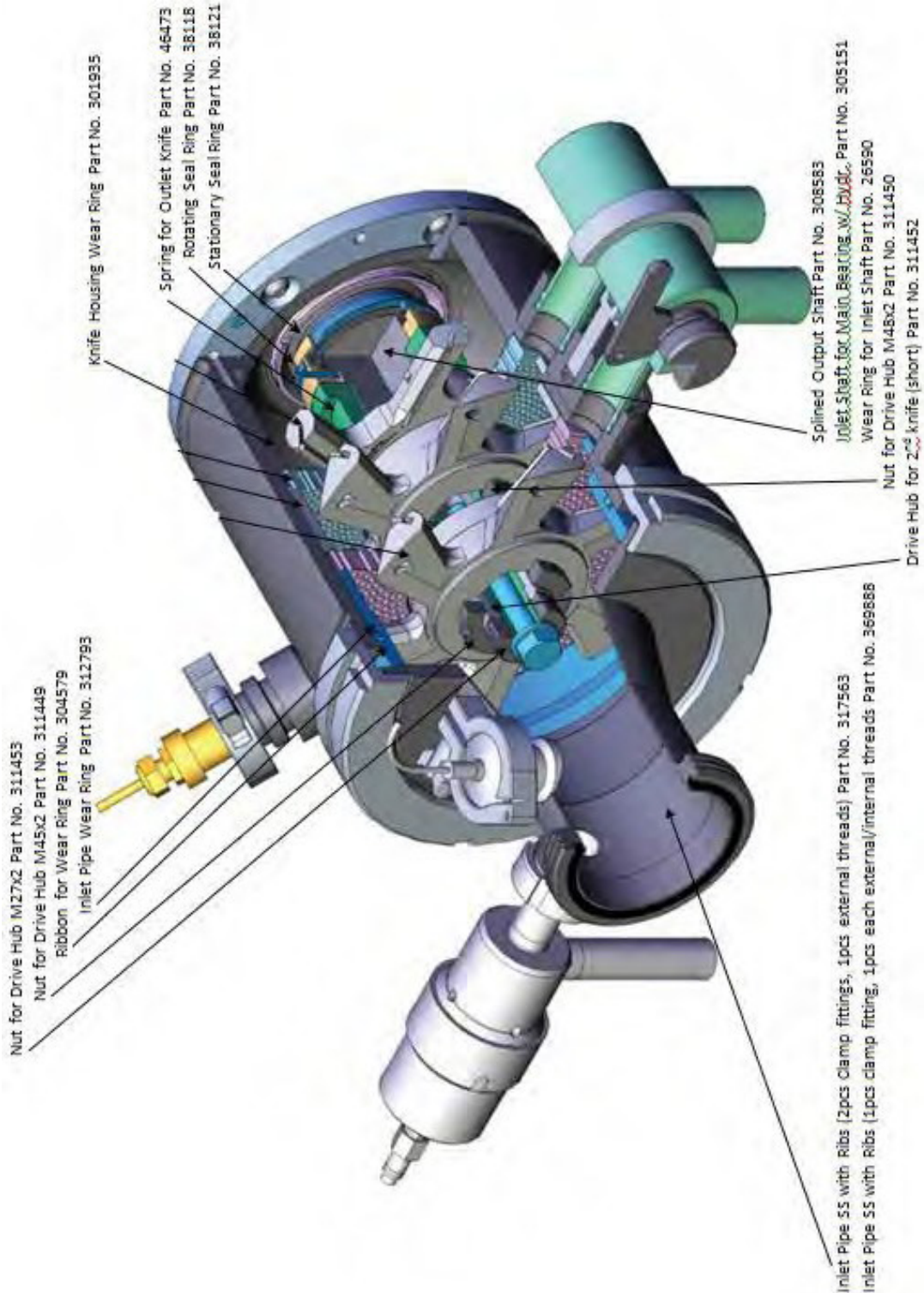


Follow us on LinkedIn



Follow us on Facebook

Wolfgang® / CFS® / GEA® Emulsifier Parts - EcoCut E.225 (Cont.)





www.koncepttech.com

Koncept Tech ApS, Industrivej 6, DK-4200 Slagelse, Denmark, Phone: +45 70271410 E-mail: parts@koncepttech.com

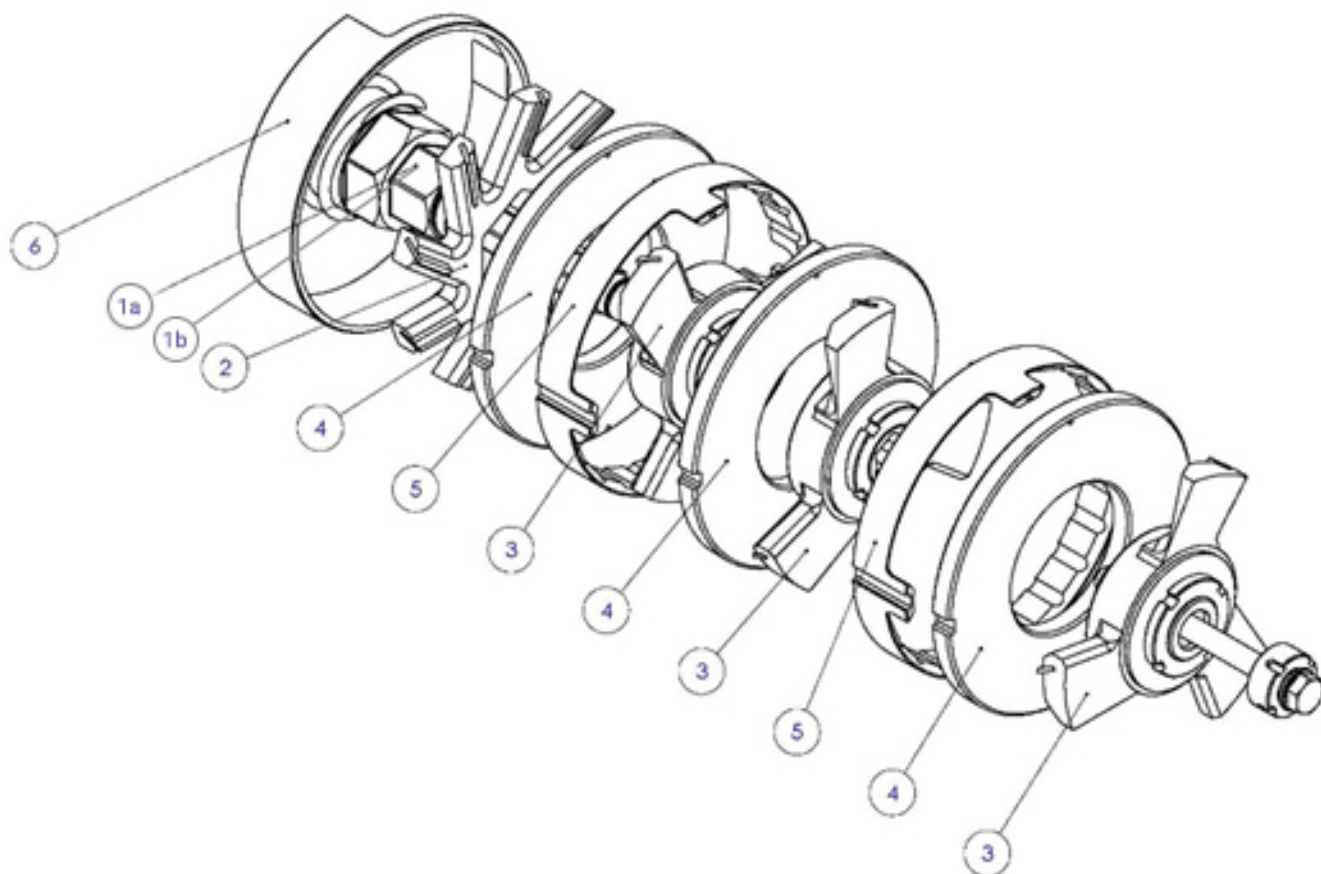
All items, parts, and accessories listed on the website of Koncept Tech ApS, are manufactured by Koncept Tech ApS, or manufactured to Koncept Tech ApS, specifications. The names of the original equipment manufacturers referred to on this site, such as but not limited to: Camitech®, Handtmann®, K&G®, Krämer + Grebe®, CFS®, GEA®, Karl Schnell®, KS®, Laska®, Palmia®, Petso®, Seydelmann®, Simo®, Haarslev®, Weiler®, Minomaster®, ANCO®, Cozzini®, The Middleby Corporation®, Wolfgang®, Comvair®, Auto®, Beehive®, Yeldmaster®, Meatmaker®, Poss®, Townsend®, Lima® etc., are all registered trademarks of their respective companies. All original equipment manufacturer's names are listed as Camitech® type, Handtmann® type, K&G® type, Krämer + Grebe® type, CFS® type, Karl Schnell® type, KS® type, Laska® type, Palmia® type, Petso® type, Seydelmann® type, Simo® type, Haarslev® type, Weiler® type, Minomaster® type, ANCO® type, Cozzini® type, Wolfgang® type, Comvair® type, Auto® type, Beehive® type, Yeldmaster® type, Meatmaker® type, Poss® type, Townsend® type, Lima® type to indicate that these items are manufactured by Koncept Tech ApS, and not the original equipment manufacturers. Unless specifically stated otherwise, Koncept Tech ApS, has no association or affiliation with any entities/ companies listed.

Wolfking® / CFS® / GEA® Emulsifier Parts - EcoCut E.225 (Cont.)

Machine Type	Description	Part Number
Wolfking® EcoCut E.225 CFS® EcoCut E.225 GEA® EcoCut E.225	Nut for drive hub M27x2	5000311453  311453 
Wolfking® EcoCut E.225 CFS® EcoCut E.225 GEA® EcoCut E.225	Nut for drive hub M45x2	5000311449  311449 
Wolfking® EcoCut E.225 CFS® EcoCut E.225 GEA® EcoCut E.225	Ribbon for wear ring	5000304579  304579 
Wolfking® EcoCut E.225 CFS® EcoCut E.225 GEA® EcoCut E.225	Inlet cone wear ring	5000312793  312793 
Wolfking® EcoCut E.225 CFS® EcoCut E.225 GEA® EcoCut E.225	Knife housing wear ring	5000301935  301935 
Wolfking® EcoCut E.225 CFS® EcoCut E.225 GEA® EcoCut E.225	Spring for outlet knife	5000046473  46473 
Wolfking® EcoCut E.225 CFS® EcoCut E.225 GEA® EcoCut E.225	Seal ring, rotating	5000038118  38118 
Wolfking® EcoCut E.225 CFS® EcoCut E.225 GEA® EcoCut E.225	Seal ring, stationary	5000038121  38121 
Wolfking® EcoCut E.225 CFS® EcoCut E.225 GEA® EcoCut E.225	Inlet cone with ribs (2 pcs. clamp fitting, 1 pcs. external threads), stainless steel	5000317563 317563
Wolfking® EcoCut E.225 CFS® EcoCut E.225 GEA® EcoCut E.225	Inlet cone with ribs (1 pcs. clamp fitting, 1 pcs. external/internal threads), stainless steel	5000369888  369888 
Wolfking® EcoCut E.225 CFS® EcoCut E.225 GEA® EcoCut E.225	Inlet cone with ribs (1 pcs. clamp fitting, 1 pcs. external/internal threads), stainless	43-301
Wolfking® EcoCut E.225 CFS® EcoCut E.225 GEA® EcoCut E.225	Splined output shaft	5000308583  308583 
Wolfking® EcoCut E.225 CFS® EcoCut E.225 GEA® EcoCut E.225	Inlet shaft for main bearing	5000305151  305151 
Wolfking® EcoCut E.225 CFS® EcoCut E.225 GEA® EcoCut E.225	Wear ring for inlet shaft	5000026590  26590 
Wolfking® EcoCut E.225 CFS® EcoCut E.225 GEA® EcoCut E.225	Nut for drive hub	5000311450  311450 
Wolfking® EcoCut E.225 CFS® EcoCut E.225 GEA® EcoCut E.225	Drive hub for second knife	5000311452  311452 
Wolfking® EcoCut E.225 CFS® EcoCut E.225 GEA® EcoCut E.225	Hub for knife set	5000311451  311451 
Wolfking® EcoCut E.225 CFS® EcoCut E.225 GEA® EcoCut E.225	Knife Housing Wear Ring	301935 

Wolfking® / CFS® / GEA® Emulsifier Parts - EcoCut E.225 (Cont.)

Knife Cassette Assembly



*EcoCut and Triplecut 2pcs hole plates, Quadrocut 3pcs hole plate assembly

Pos. No	Description	Wolfking®/ CFS® EcoCut 225	GEA® EcoCut 225
1a	Drive hub	311451	5000311451
1b	Drive hub	43-107	43-107
2	Knife outlet	3, 6, 9 or 12 arms	3, 6, 9 or 12 arms
3	Knife inlet	3 or 6 arms	3 or 6 arms
4	Holeplate	1.2-10mm	1.2-10mm
5	Holeplate spacer	312693	5000312693
6	Knife-housing wear ring	301935	5000301935

Wolfking® / CFS® / GEA® Emulsifier Parts - EcoCut E.225 (Cont.)

Knife Cassette Drive Hub Assembly

Pos. No	Description	Wolfking® / CFS® EcoCut 225	GEA® EcoCut 225
1	Drive hub	311451	5000311451
2	Drive hub 2nd	311452	5000311452
4	Drive hub nut M48x2 LH	311450	5000311450
5	Drive hub nut M27x2	311453	5000311453
6	Drive hub nut M45x2	311449	5000311449
7	Drive hub spring	46473	5000046473
8	Washer	22726	5000022726
9	Bolt	22927	5000022150



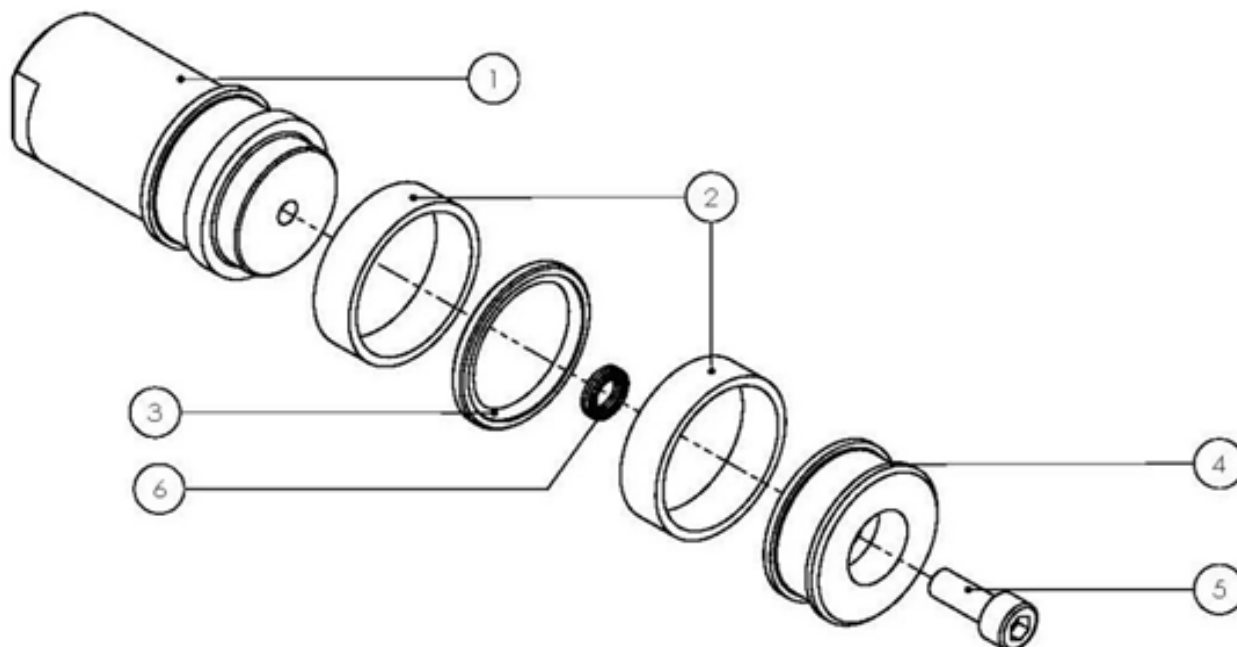
www.koncepttech.com

Koncept Tech ApS, Industrivej 6, DK-4200 Slagelse, Denmark, Phone: +45 70271410 E-mail: parts@koncepttech.com

All items, parts, and accessories listed on the website of Koncept Tech ApS, are manufactured by Koncept Tech ApS, or manufactured to Koncept Tech ApS, specifications. The names of the original equipment manufacturers referred to on this site, such as but not limited to: Camitech®, Handtmann®, K&G®, Krämer + Grebe®, CFS®, GEA®, Karl Schnell®, KS®, Laska®, Palmia®, Petsmo®, Seydelmann®, Simo®, Haarslev®, Weiler®, Mincemaster®, ANCO®, Cozzini®, The Middleby Corporation®, Wolfking®, Comvair®, Auto®, Beehive®, Yeldmaster®, Meatmaker®, Poss®, Townsend®, Lima® etc., are all registered trademarks of their respective companies. All original equipment manufacturer's names are listed as Camitech® type, Handtmann® type, K&G® type, Krämer + Grebe® type, CFS® type, Karl Schnell® type, KS® type, Laska® type, Palmia® type, Petsmo® type, Seydelmann® type, Simo® type, Haarslev® type, Weiler® type, Mincemaster® type, ANCO® type, Cozzini® type, Wolfking® type, Comvair® type, Auto® type, Beehive® type, Yeldmaster® type, Meatmaker® type, Poss® type, Townsend® type, Lima® type to indicate that these items are manufactured by Koncept Tech ApS, and not the original equipment manufacturers. Unless specifically stated otherwise, Koncept Tech ApS, has no association or affiliation with any entities/ companies listed.

Wolfgang® / CFS® / GEA® Emulsifier Parts - EcoCut E.225 (Cont.)

Hydraulic Piston Assembly



Pos. No	Description	Wolfgang® / CFS® EcoCut 225	GEA® EcoCut 225
1	Piston	308553	5000308553
2	Sleeve bushing	29838	5000029838
3	Seal	29717	5000029717
4	End piece for piston	308554	5000308554
5	Allen head screw M6x15 SS	22606	5000022606
6	Lock washer M6 SS	3421	5000003421



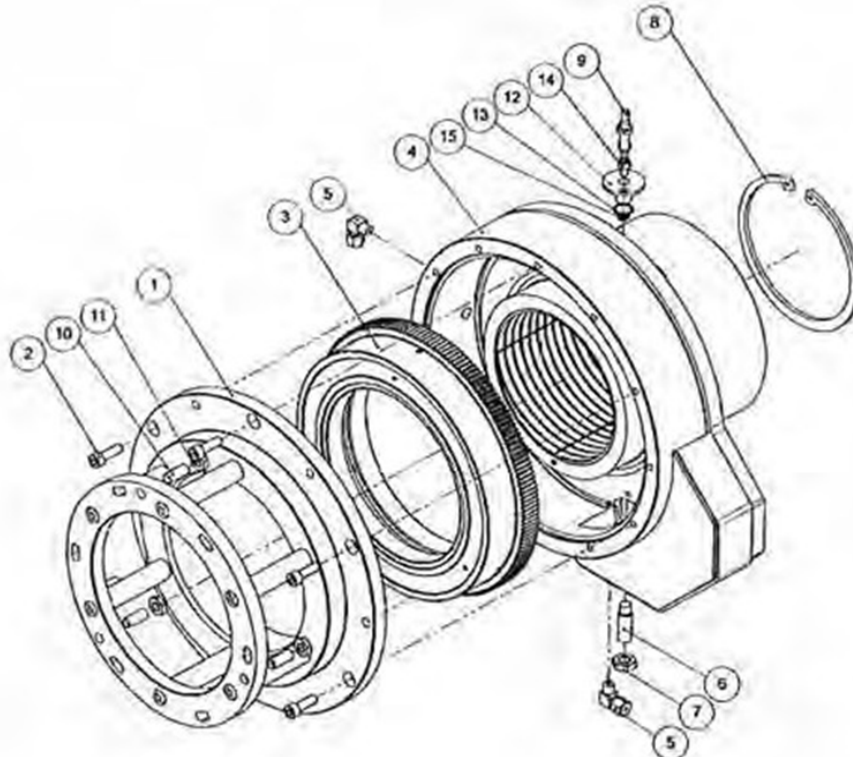
Follow us on LinkedIn



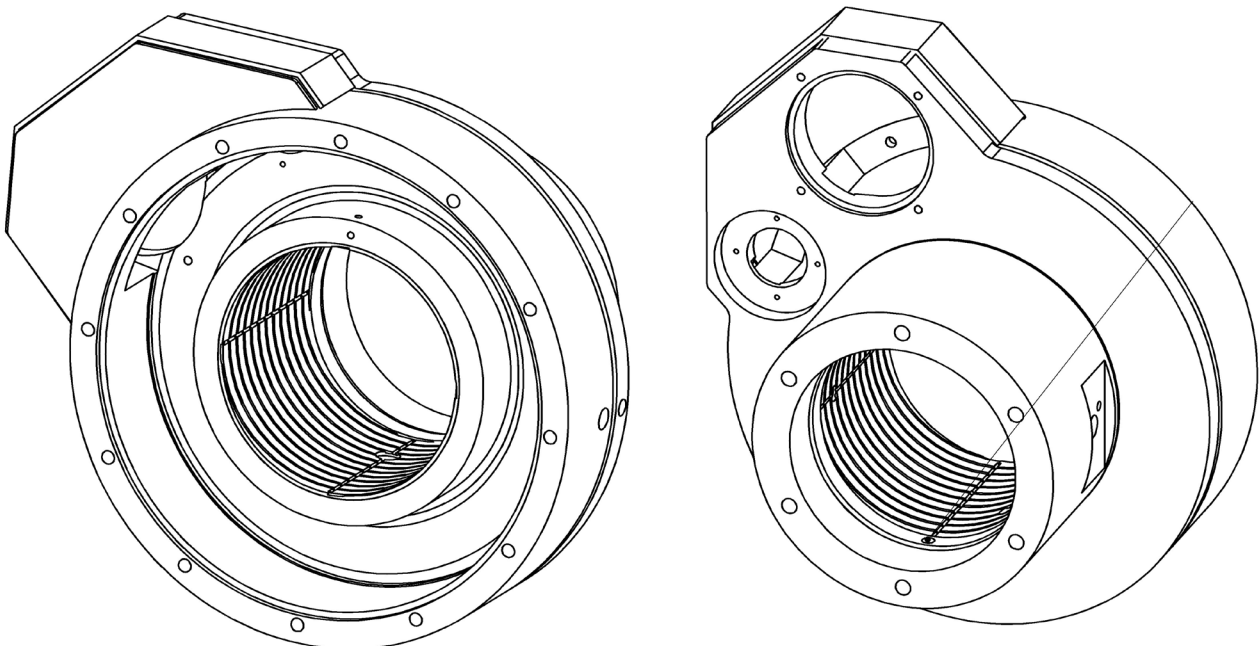
Follow us on Facebook

Wolfgang® / CFS® / GEA® Emulsifier Parts - EcoCut E.225 (Cont.)

Exploded View of Adjusting Device for EcoCut E.225, Part Number 308969



Adjustment device for Emulsifier 225
part number 308969



Housing for knife adjustment for Emulsifier 225
part number 308967

www.koncepttech.com

Koncept Tech ApS, Industrivej 6, DK-4200 Slagelse, Denmark, Phone: +45 70271410 E-mail: parts@koncepttech.com







All items, parts, and accessories listed on the website of Koncept Tech ApS, are manufactured by Koncept Tech ApS, or manufactured to Koncept Tech ApS, specifications. The names of the original equipment manufacturers referred to on this site, such as but not limited to: Camiltech®, Handtmann®, K&G®, Krämer + Grebe®, CFS®, GEA®, Karl Schnell®, KS®, Laska®, Palmia®, Petzmo®, Seydelmann®, Simo®, Haarslev®, Weiler®, Mincemaster®, ANCO®, Cozzini®, The Middleby Corporation®, Wolfgang®, Comvair®, Auto®, Beehive®, Yieldmaster®, Meatmaker®, Poss®, Townsend®, Lima® etc., are all registered trademarks of their respective companies. All original equipment manufacturer's names are listed as Camiltech® type, Handtmann® type, K&G® type, Krämer + Grebe® type, CFS® type, Karl Schnell® type, KS® type, Laska® type, Palmia® type, Petzmo® type, Seydelmann® type, Simo® type, Haarslev® type, Weiler® type, Mincemaster® type, ANCO® type, Cozzini® type, Wolfgang® type, Comvair® type, Auto® type, Beehive® type, Yieldmaster® type, Meatmaker® type, Poss® type, Townsend® type, Lima® type to indicate that these items are manufactured by Koncept Tech ApS, and not the original equipment manufacturers. Unless specifically stated otherwise, Koncept Tech ApS, has no association or affiliation with any entities/ companies listed.

Wolfking® / CFS® / GEA® Emulsifier Parts - EcoCut E.225 (Cont.)


Parts List for Adjusting Device for EcoCut E.225 Part Number 308969

Machine Type	Pos. No.	Description	Qty.	Part Number
Wolfking® EcoCut E.225 CFS® EcoCut E.225 GEA® EcoCut E.225	01	Flush cover	1	5000307431 307431
Wolfking® EcoCut E.225 CFS® EcoCut E.225 GEA® EcoCut E.225	02	Front bearing cover	1	5000308964 308964
Wolfking® EcoCut E.225 CFS® EcoCut E.225 GEA® EcoCut E.225	03	Front bearing housing	1	5000308965 308965
Wolfking® EcoCut E.225 CFS® EcoCut E.225 GEA® EcoCut E.225	04	Output shaft	1	5000308583 308583
Wolfking® EcoCut E.225 CFS® EcoCut E.225 GEA® EcoCut E.225	05	Bonded seal, M6 mm, size ref. 867, stainless steel	6	5000140062 140062
Wolfking® EcoCut E.225 CFS® EcoCut E.225 GEA® EcoCut E.225	08	Lock nut, M70x20, type FU 14, stainless steel	1	5000026134 26134
Wolfking® EcoCut E.225 CFS® EcoCut E.225 GEA® EcoCut E.225	09	Angle contact ball bearing, C3	1	5000027615 27615
Wolfking® EcoCut E.225 CFS® EcoCut E.225 GEA® EcoCut E.225	10	Labyrinth seal, Z015	2	5000026116 26116
Wolfking® EcoCut E.225 CFS® EcoCut E.225 GEA® EcoCut E.225	11	Stuffing box	1	5000307432 307432
Wolfking® EcoCut E.225 CFS® EcoCut E.225 GEA® EcoCut E.225	12	Slip ring, Ø18xØ5.33	1	5000140061 140061
Wolfking® EcoCut E.225 CFS® EcoCut E.225 GEA® EcoCut E.225	13	Hexagon head screw, M6x30-A2	6	5000022189 22189
Wolfking® EcoCut E.225 CFS® EcoCut E.225 GEA® EcoCut E.225	15	V-ring, Viton, VA 70, 68x73 mm	1	5000027724 27724
Wolfking® EcoCut E.225 CFS® EcoCut E.225 GEA® EcoCut E.225		Lubrication nipple, M6, DV1-M6x1, straight	2	5000025348 25348
Wolfking® EcoCut E.225 CFS® EcoCut E.225 GEA® EcoCut E.225		O-ring, synthetic, 70.00x3.00 mm	1	5000028888 28888
Wolfking® EcoCut E.225 CFS® EcoCut E.225 GEA® EcoCut E.225		Thread connection, 1/8"xØ6, straight, type 223-13614-9	1	5000029728 29728

Wolfking® / CFS® / GEA® Emulsifier Parts - EcoCut E.225 - Electrical Parts

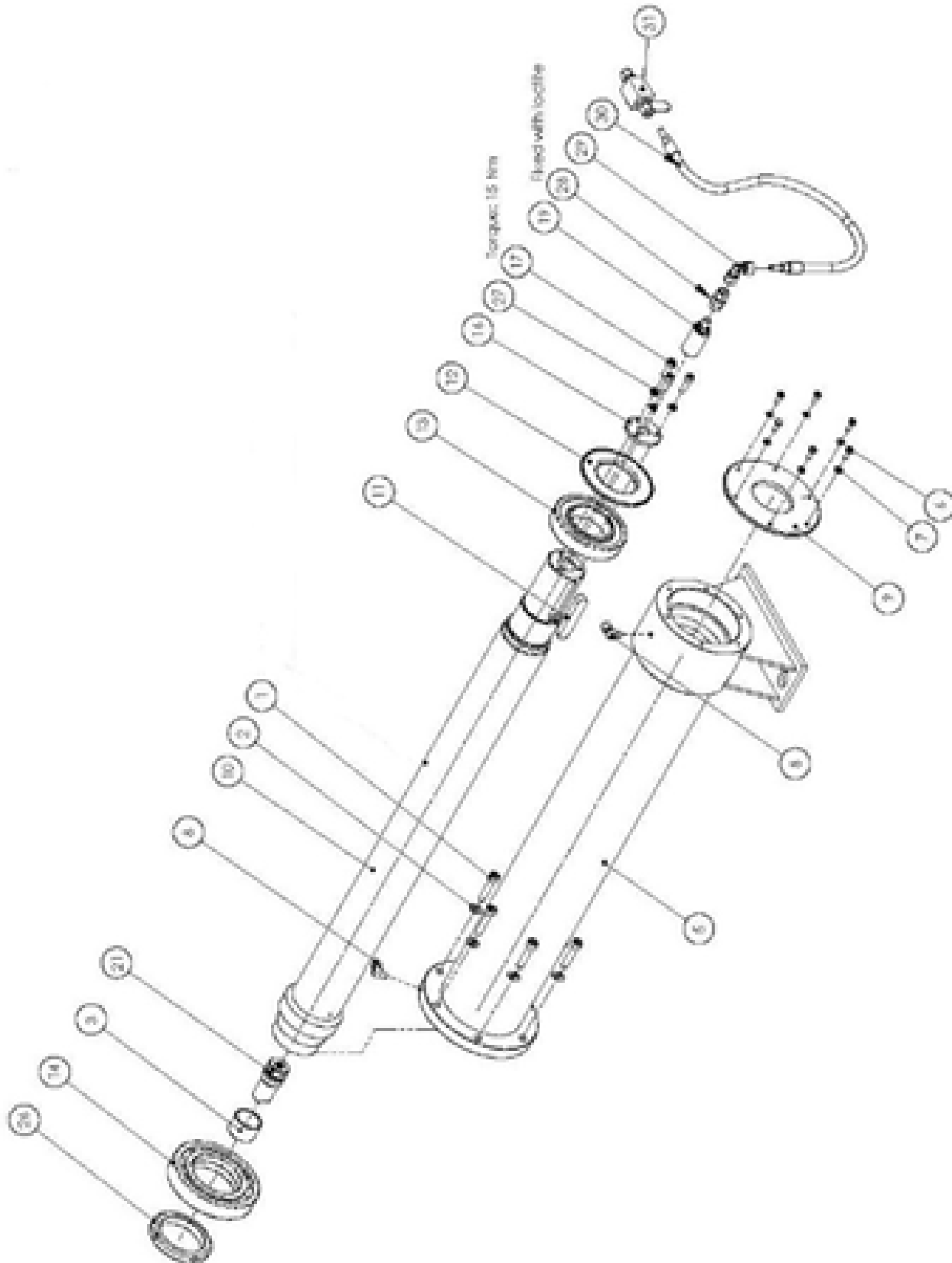
Machine Type	Description	Part Number
Wolfking® EcoCut E.225 CFS® EcoCut E.225 GEA® EcoCut E.225	Temperature sensor pipe	5000014499 14499
Wolfking® EcoCut E.225 CFS® EcoCut E.225 GEA® EcoCut E.225	Pressure transmitter	5000046607  46607 
Wolfking® EcoCut E.225 CFS® EcoCut E.225 GEA® EcoCut E.225	Safety lock switch 10 m wire	50000014321  14321  5000377110 377110 4828-1
Wolfking® EcoCut E.225 CFS® EcoCut E.225 GEA® EcoCut E.225	Ferrogard magnetic switch 10m wire	5000367768 367768
Wolfking® EcoCut E.225 CFS® EcoCut E.225 GEA® EcoCut E.225	Safety wire kit 20 m (Tripwire, wire 20 m, spring)	otmm900-xSafetywirekit 
Wolfking® EcoCut E.225 CFS® EcoCut E.225 GEA® EcoCut E.225	PT 100 sensor with flange	wkgr900-PT100xKP5452656-4 



PT 100 sensor with clamp,
part number wkgr900-PT100xKP5452656-4 

Wolfling® / CFS® / GEA® Emulsifier Parts - EcoCut E.225 (Cont.)

Input Shaft Assembly For EcoCut E.225, Part Number 505152



*To see part list for Input Shaft Assembly, please see page no 15

www.koncepttech.com

Koncept Tech ApS, Industrivej 6, DK-4200 Slagelse, Denmark, Phone: +45 70271410 E-mail: parts@koncepttech.com

All items, parts, and accessories listed on the website of Koncept Tech ApS, are manufactured by Koncept Tech ApS, or manufactured to Koncept Tech ApS, specifications. The names of the original equipment manufacturers referred to on this site, such as but not limited to: Camiltech®, Handtmann®, K&G®, Krämer + Grebe®, CFS®, GEA®, Karl Schnell®, KS®, Laska®, Palmia®, Petsmo®, Seydelmann®, Simo®, Haarslev®, Weiler®, Mincemaster®, ANCO®, Cozzini®, The Middleby Corporation®, Wolfling®, Comvair®, Auto®, Beehive®, Yeldmaster®, Meatmaker®, Poss®, Townsend®, Lima® etc., are all registered trademarks of their respective companies. All original equipment manufacturer's names are listed as Camiltech® type, Handtmann® type, K&G® type, Krämer + Grebe® type, CFS® type, Karl Schnell® type, KS® type, Laska® type, Palmia® type, Petsmo® type, Seydelmann® type, Simo® type, Haarslev® type, Weiler® type, Mincemaster® type, ANCO® type, Cozzini® type, Wolfling® type, Comvair® type, Auto® type, Beehive® type, Yeldmaster® type, Meatmaker® type, Poss® type, Townsend® type, Lima® type to indicate that these items are manufactured by Koncept Tech ApS, and not the original equipment manufacturers. Unless specifically stated otherwise, Koncept Tech ApS, has no association or affiliation with any entities/ companies listed.

Wolfking® / CFS® / GEA® Emulsifier Parts - EcoCut E.225 (Cont.)

Input Shaft Assembly, Part Number 505152

Pos. No	Description	Wolfking® / CFS® EcoCut 225	GEA® EcoCut 225
1	Allen screw M10x45 SS	22638	5000022638
2	Washer M10 SS	22724	5000022724
3	Wear ring	26590	5000026590
5	Housing for input shaft	305153	5000305153
6	Hex head screw M6x16 SS	22186	5000022186
7	Washer M6 SS	22722	5000022722
8	Lubrication nipple 1/8" 90°	29521	5000029521
9	Housing end cover	47438	5000047438
10	Input shaft	305151	5000305151
11	Parallel key 18x11x90	24763	5000024763
12	Labyrinth seal Z214	26111	5000026111
13	Cylindrical roller bearing	27859	5000027859
14	Ball bearing	23405	5000023405
16	Input shaft end cover	304929	5000304929
17	Allen screw M8x25 SS	22620	5000022620
19	Rotating union 70bar	23159	5000023159
21	Piston for hydraulic	308555	5000308855
26	Lock Nut M80x2 FU16	23429	5000023429
27	Lock washer Nord-Lock M8	3421	5000003422
28	Hydraulic connection straight	29742	5000029742
29	Hydraulic connection angle	29510	1000216523
30	Hydraulic hose 500mm	29946	5000029946
31	Ball valve	29518	5000029518



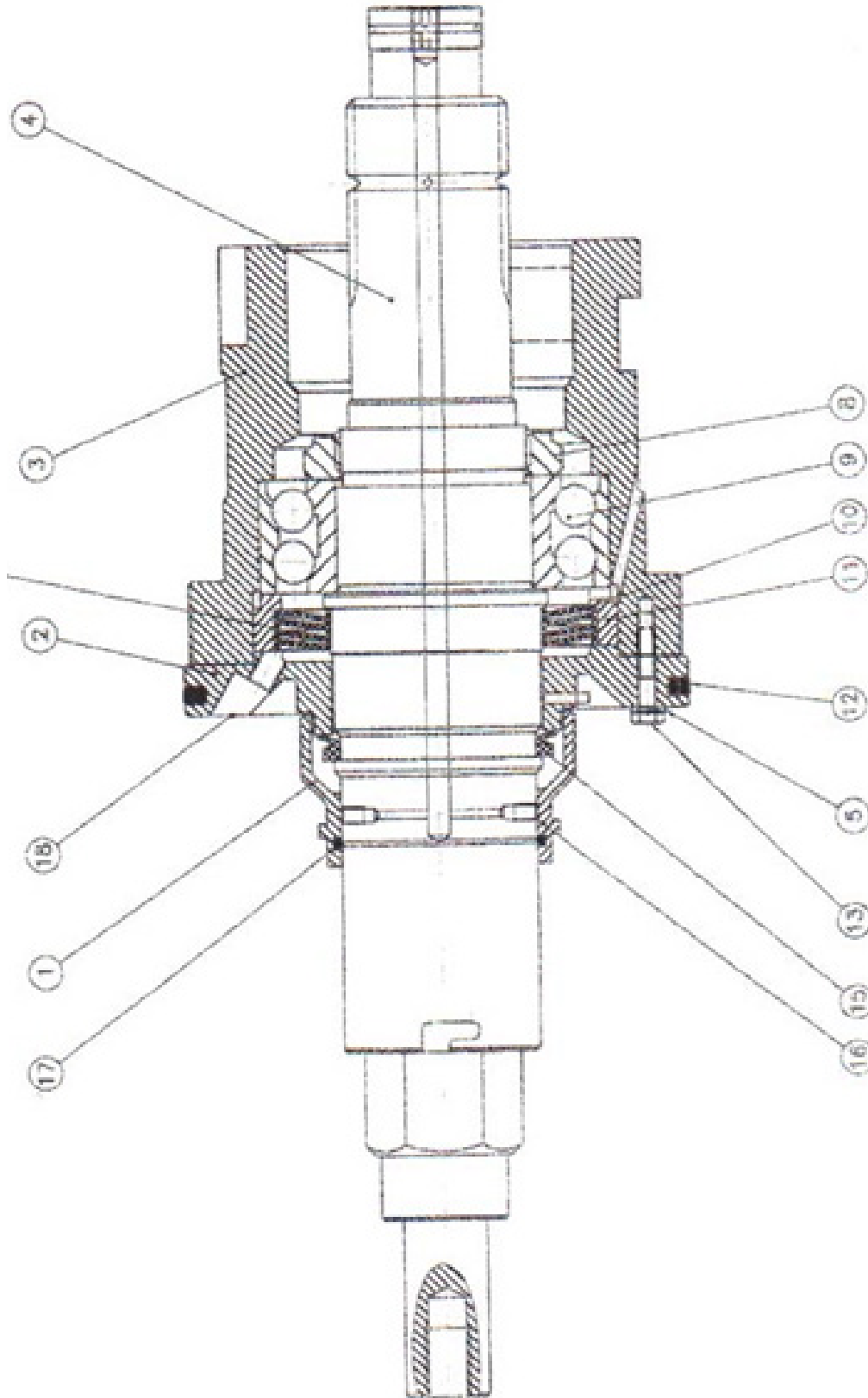
Follow us on LinkedIn



Follow us on Facebook

Wolfling® / CFS® / GEA® Emulsifier Parts - EcoCut E.225 (Cont.)

Output Shaft Assembly



*To see part list for Output Shaft Assembly,
please see page no. 17

www.koncepttech.com

Koncept Tech ApS, Industrivej 6, DK-4200 Slagelse, Denmark, Phone: +45 70271410 E-mail: parts@koncepttech.com

All items, parts, and accessories listed on the website of Koncept Tech ApS, are manufactured by Koncept Tech ApS, or manufactured to Koncept Tech ApS, specifications. The names of the original equipment manufacturers referred to on this site, such as but not limited to: Camitech®, Handtmann®, K&G®, Krämer + Grebe®, CFS®, GEA®, Karl Schnell®, KS®, Laska®, Palmia®, Petsmo®, Seydelmann®, Simo®, Haarslev®, Weiler®, Mincemaster®, ANCO®, Cozzini®, The Middleby Corporation®, Wolfling®, Comvair®, Auto®, Beehive®, Yeldmaster®, Meatmaker®, Poss®, Townsend®, Lima® etc., are all registered trademarks of their respective companies. All original equipment manufacturer's names are listed as Camitech® type, Handtmann® type, K&G® type, Krämer + Grebe® type, CFS® type, Karl Schnell® type, KS® type, Laska® type, Palmia® type, Petsmo® type, Seydelmann® type, Simo® type, Haarslev® type, Weiler® type, Mincemaster® type, ANCO® type, Cozzini® type, Wolfling® type, Comvair® type, Auto® type, Beehive® type, Yeldmaster® type, Meatmaker® type, Poss® type, Townsend® type, Lima® type to indicate that these items are manufactured by Koncept Tech ApS, and not the original equipment manufacturers. Unless specifically stated otherwise, Koncept Tech ApS, has no association or affiliation with any entities/ companies listed.

Wolfking® / CFS® / GEA® Emulsifier Parts - EcoCut E.225 (Cont.)

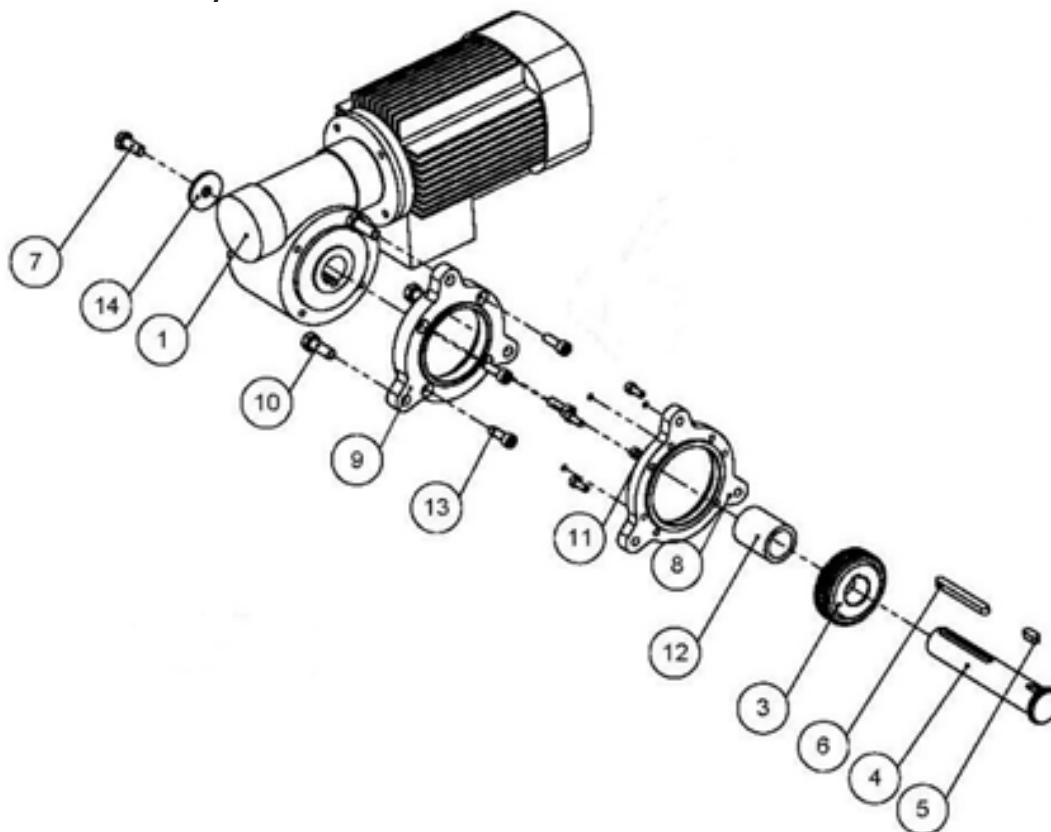
Output Shaft Assembly

Pos. No	Description	Wolfking® / CFS® EcoCut 225	GEA® EcoCut 225
1	Flush cover	307431	5000307421
2	Front bearing cover	308964	5000308964
3	Front bearing housing	308965	1000295413
4	Output shaft	308583	5000308583
5	Norlock M6 18/8	140062	5000140062
8	Locknut M70x2 18/8	26134	5000026134
9	Angle contact bearing	27615	5000029316/5000029506
10	Labyrinth seal Z015	26116	5000026116
11	Stuffing box	307432	1000295482
12	Slip ring 180x5.33	140061	5000140061
13	Hex head screw M6x30	22189	5000022189
15	V-ring Viton VA70	27724	5000027724
16	Lube nipple DV1-M6x1	25348	1000295457*
17	O-ring 70x3	28888	1000300682
18	Lubrication nipple	29728	5000029728

* For GEA Emulsifier Pos 16 is a spacer ring, that is located between the 2pcs bearings at Pos 9

Wolfgang® / CFS® / GEA® Emulsifier Parts - EcoCut E.225 (Cont.)

Knife Adjustment Motor Assembly



Pos. No	Description	Wolfgang® / CFS® EcoCut 225	GEA® EcoCut 225
1	BJ gear motor	29074	5000029074
3	Gear wheel	311551	5000311551
4	Shaft for gear motor	311549	5000311549
5	Parallel key	24828	5000024828
6	Parallel key	24722	5000024722
7	Hexagon screw M10x25 SS	22209	5000022209
8	Base for gear motor	311546	5000311546
9	Flange for gear motor	311547	5000311547
10	Hexagon screw M10x30 SS	22210	5000022210
11	Allen screw flat M6x16 SS	22569	5000022606
12	Bushing for shaft	311548	5000311548
13	Allen screw M8x25	22580	5000022620
14	Washer for gear motor 40x11x5	34597	5000034597



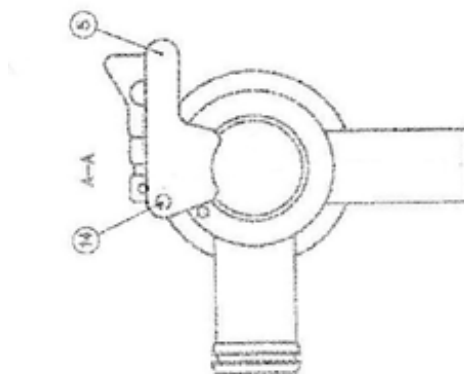
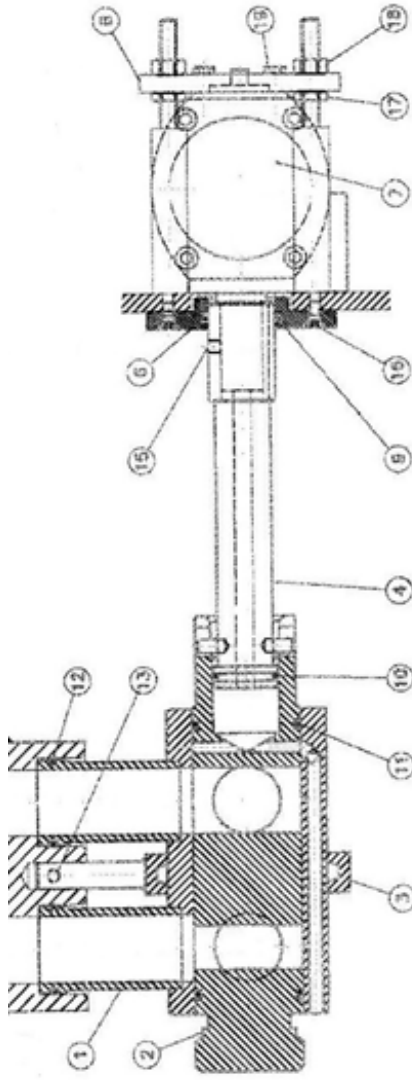
Follow us on LinkedIn



Follow us on Facebook

Wolfling® / CFS® / GEA® Emulsifier Parts - EcoCut E.225 (Cont.)

Bone Elimination System Assembly



*To see part list for Bone Elimination System Assembly
please see page no. 20

www.koncepttech.com

Koncept Tech ApS, Industrivej 6, DK-4200 Slagelse, Denmark, Phone: +45 70271410 E-mail: parts@koncepttech.com

All items, parts, and accessories listed on the website of Koncept Tech ApS, are manufactured by Koncept Tech ApS, or manufactured to Koncept Tech ApS, specifications. The names of the original equipment manufacturers referred to on this site, such as but not limited to: Camiltech®, Handtmann®, K&G®, Krämer + Grebe®, CFS®, GEA®, Karl Schnell®, KS®, Laska®, Palmia®, Petsmo®, Seydelmann®, Simo®, Haarslev®, Weiler®, Mincemaster®, ANCO®, Cozzini®, The Middleby Corporation®, Wolfling®, Comvair®, Auto®, Beehive®, Yeldmaster®, Meatmaker®, Poss®, Townsend®, Lima® etc., are all registered trademarks of their respective companies. All original equipment manufacturer's names are listed as Camiltech® type, Handtmann® type, K&G® type, Krämer + Grebe® type, CFS® type, Karl Schnell® type, KS® type, Laska® type, Palmia® type, Petsmo® type, Seydelmann® type, Simo® type, Haarslev® type, Weiler® type, Mincemaster® type, ANCO® type, Cozzini® type, Wolfling® type, Comvair® type, Auto® type, Beehive® type, Yeldmaster® type, Meatmaker® type, Poss® type, Townsend® type, Lima® type to indicate that these items are manufactured by Koncept Tech ApS, and not the original equipment manufacturers. Unless specifically stated otherwise, Koncept Tech ApS, has no association or affiliation with any entities/ companies listed.

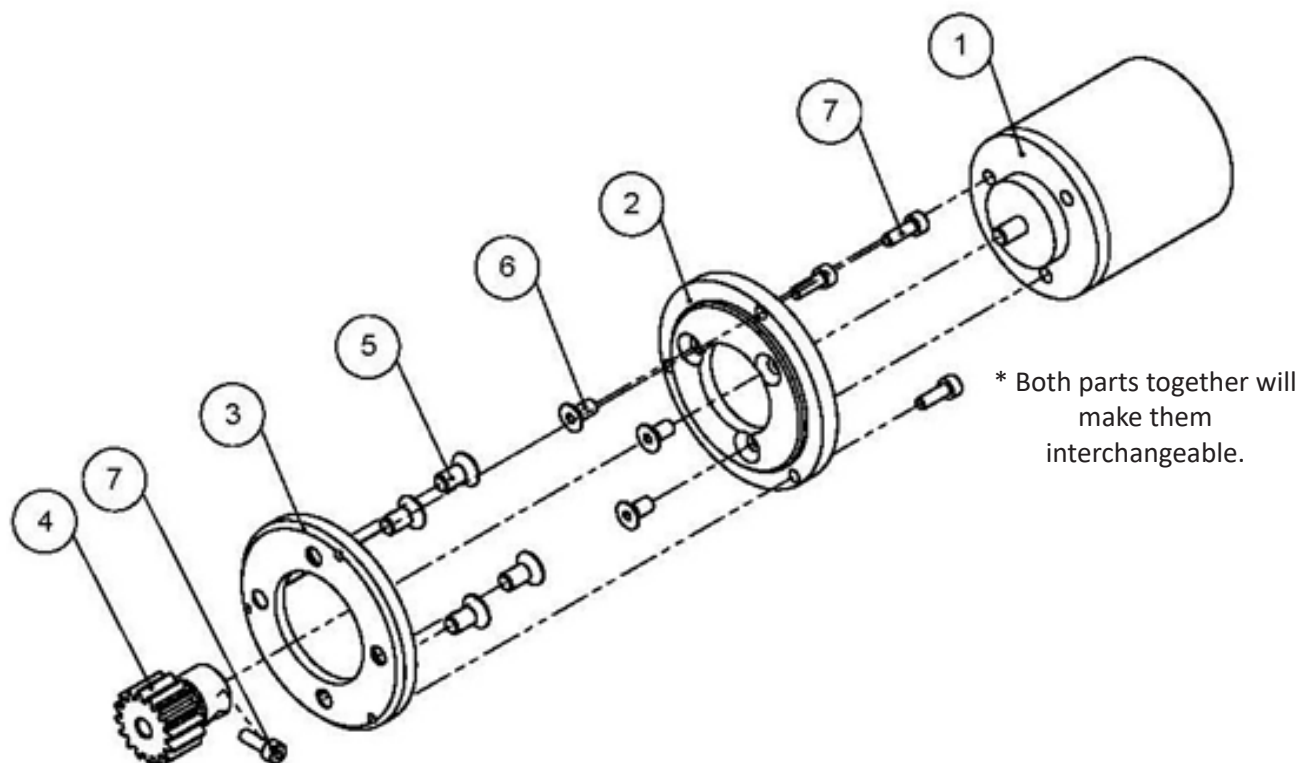
Wolfking® / CFS® / GEA® Emulsifier Parts - EcoCut E.225 (Cont.)

Bone Elimination System Assembly, Part Number 312445

Pos. No	Description	Wolfking® / CFS® EcoCut 225	GEA® EcoCut 225
1	Cylinder for double BES	312446	5000312446
2	Rotating piston for BES	318226	5000312447
3	Clamp for double BES	309076	5000309076
4	Drive shaft for double BES	309079	5000309079
5	Lock for rotating piston	309074	5000381930
6	Cover plate	304133	5000304133
7	Actuator cylinder	38789	5000038789
8	Mounting plate	304135	5000304135
9	O-ring 30.0x3.0	23229	1000300364
10	O-ring 24.2x3.0	23396	1000300670
11	O-ring 40.86x3.53	23247	1000300515
12	O-ring 34.5x3.0	23237	1000300368
13	Allen set screw M8x16 SS	22861	K002170
14	Hex head screw M6x16 SS	22186	5000022570
15	Allen set screw M6x6 SS	22670	5000022670
16	Allen flat head screw M5x12 SS	3275	5000003275
17	Counter nut M8 SS	27426	5000027426
18	Hex nut M8	22305	5000022305
19	Hex head screw M5x16 SS	22179	5000022179

Wolfking® / CFS® / GEA® Emulsifier Parts - EcoCut E.225 (Cont.)

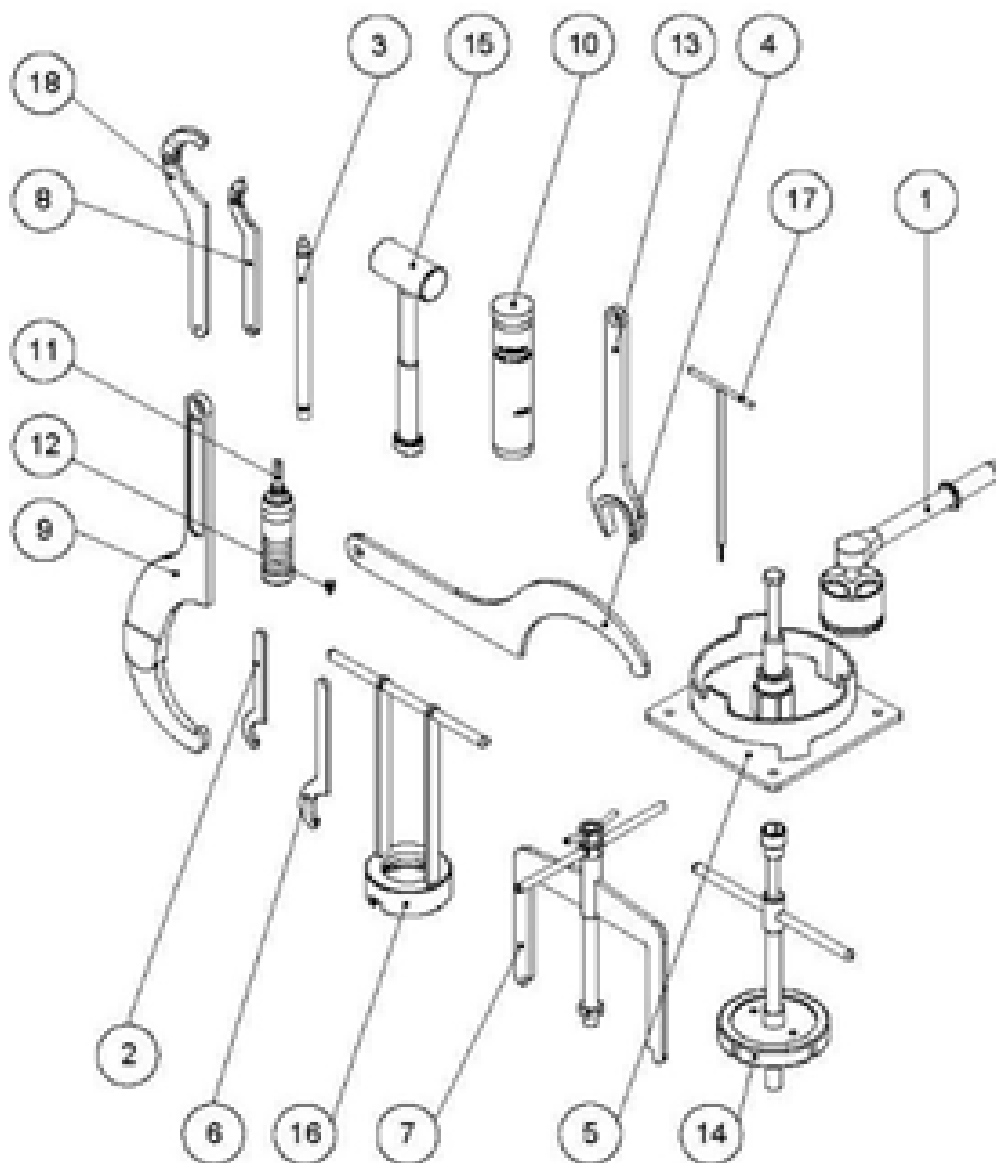
Encoder Assembly



Pos. No	Description	Wolfking® / CFS® EcoCut 225	GEA® EcoCut 225
1	Encoder	16172	5000016172
2	Mounting ring for encoder	308092	5000308092
3	Mounting ring for encoder	307684	5000307684
4	Gear wheel for encoder	308098	5000396166*
5	Allen flat head M6x12 SS	22568	5000022568
6	Allen flat head M5x10 SS	22776	5000022776
7	Allen set screw M3x6 SS	28502	
7	Allen head screw M4x 12 SS		5000026058*

Wolfling® / CFS® / GEA® Emulsifier Parts - EcoCut E.225 (Cont.)

Accessory Tools



*To see part list for Accessory Tools
 please see page no. 23

www.koncepttech.com

Koncept Tech ApS, Industrivej 6, DK-4200 Slagelse, Denmark, Phone: +45 70271410 E-mail: parts@koncepttech.com

All items, parts, and accessories listed on the website of Koncept Tech ApS, are manufactured by Koncept Tech ApS, or manufactured to Koncept Tech ApS, specifications. The names of the original equipment manufacturers referred to on this site, such as but not limited to: Camitech®, Handtmann®, K&G®, Krämer + Grebe®, CFS®, GEA®, Karl Schnell®, KS®, Laska®, Palmia®, Petsmo®, Seydelmann®, Simo®, Haarslev®, Weiler®, Mincemaster®, ANCO®, Cozzini®, The Middleby Corporation®, Wolfling®, Comvair®, Auto®, Beehive®, Yeldmaster®, Meatmaker®, Poss®, Townsend®, Lima® etc., are all registered trademarks of their respective companies. All original equipment manufacturer's names are listed as Camitech® type, Handtmann® type, K&G® type, Krämer + Grebe® type, CFS® type, Karl Schnell® type, KS® type, Laska® type, Palmia® type, Petsmo® type, Seydelmann® type, Simo® type, Haarslev® type, Weiler® type, Mincemaster® type, ANCO® type, Cozzini® type, Wolfling® type, Comvair® type, Auto® type, Beehive® type, Yeldmaster® type, Meatmaker® type, Poss® type, Townsend® type, Lima® type to indicate that these items are manufactured by Koncept Tech ApS, and not the original equipment manufacturers. Unless specifically stated otherwise, Koncept Tech ApS, has no association or affiliation with any entities/ companies listed.

Wolfking® / CFS® / GEA® Emulsifier Parts - EcoCut E.225 (Cont.)

Accessory Tools

Pos. No	Description	Wolfking® / CFS® EcoCut 225	GEA® EcoCut 225
1	Torque ratchet	315575	5000386660
2	Hook spanner 45-50mm	311454	1000294115
3	Mounting arbor	310694	5000310694
4	Hook spanner 260mm	39023	5000039023
5	Set-up tool	311456	5000311456
6	Hook spanner 68-75mm	311455	5000311455
7	Knife cassette puller	311557	5000311557
8	Hook spanner		G276545
9	Hook spanner 155-230mm	25688	5000025688
10	Grease		1000233306
11	Grease gun	25700	5000025700
12	Grease point	25636	5000025636
13	Spanner wrench 46mm	39024	5000039024
14	Inlet pipe puller	305424	5000305424
15	Dead blow hammer	25664	5000029697
16	Seal puller	311444	5000311444
17	Allen T-wrench	26722	5000026722
18	Hook spanner 60-90mm	25777	G276555

Emulsifier Parts - QuadroCut 225

QuadroCut 225[®]

scansteel foodtech

The scansteel foodtech QuadroCut 225 retrofit kit for Wolfking[®]/ CFS[®]/ GEA[®] emulsifiers, type EcoCut E.225, upgrades your existing emulsifier to be capable of running production with a knife set consisting of three hole plates and four knives.

The scansteel foodtech QuadroCut 225 retrofit kit is fully adaptable to your existing Wolfking[®]/CFS[®]/GEA[®] emulsifier, type EcoCut E.225.



QuadroCut 225 cassette system and QuadroCut 225 knife housing

www.koncepttech.com

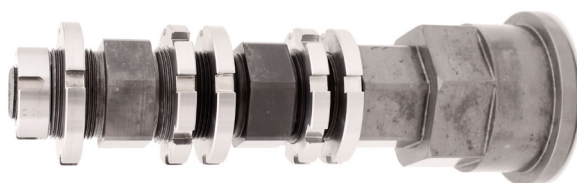
Koncept Tech ApS, Industrivej 6, DK-4200 Slagelse, Denmark, Phone: +45 70271410 E-mail: parts@koncepttech.com

All items, parts, and accessories listed on the website of Koncept Tech ApS, are manufactured by Koncept Tech ApS, or manufactured to Koncept Tech ApS, specifications. The names of the original equipment manufacturers referred to on this site, such as but not limited to: Camiltech[®], Handtmann[®], K&G[®], Krämer + Grebe[®], CFS[®], GEA[®], Karl Schnell[®], KS[®], Laska[®], Palmia[®], Petsmo[®], Seydelmann[®], Simo[®], Haarslev[®], Weiler[®], Mincemaster[®], ANCO[®], Cozzini[®], The Middleby Corporation[®], Wolfking[®], Comvair[®], Auto[®], Beehive[®], Yeldmaster[®], Meatmaker[®], Poss[®], Townsend[®], Lima[®] etc., are all registered trademarks of their respective companies. All original equipment manufacturer's names are listed as Camiltech[®] type, Handtmann[®] type, K&G[®] type, Krämer + Grebe[®] type, CFS[®] type, Karl Schnell[®] type, KS[®] type, Laska[®] type, Palmia[®] type, Petsmo[®] type, Seydelmann[®] type, Simo[®] type, Haarslev[®] type, Weiler[®] type, Mincemaster[®] type, ANCO[®] type, Cozzini[®] type, Wolfking[®] type, Comvair[®] type, Auto[®] type, Beehive[®] type, Yeldmaster[®] type, Meatmaker[®] type, Poss[®] type, Townsend[®] type, Lima[®] type to indicate that these items are manufactured by Koncept Tech ApS, and not the original equipment manufacturers. Unless specifically stated otherwise, Koncept Tech ApS, has no association or affiliation with any entities/ companies listed.

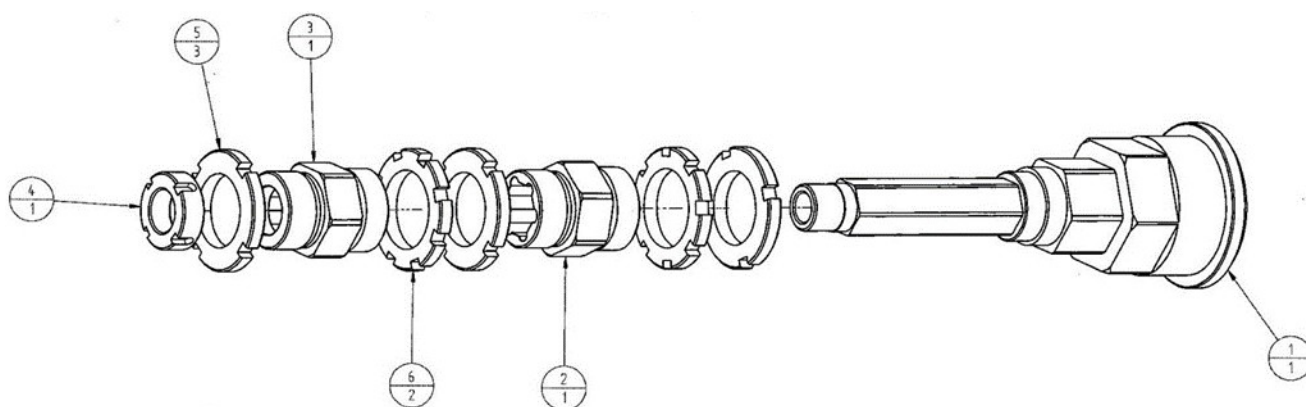
Emulsifier Parts - QuadroCut 225 (Cont.)

Parts Needed for QuadroCut Set-up

Position No.	Description	scansteel foodtech part number	Qty. Needed
1	Driving hub 1 st knife set for QuadroCut	43-107	1
2	Driving hub 2 nd knife set for QuadroCut	43-116	1
3	Driving hub 3 rd knife set for QuadroCut	43-115	1
4	Nut for driving hub M27x2 w=15	43-114	1
5	Nut for driving hub M45x2 w=9	43-113	3
6	Nut for driving hub M48x2 b=9	43-119	2



Knife housing shaft for QuadroCut 225



Exploded view of Knife housing shaft for QuadroCut 225

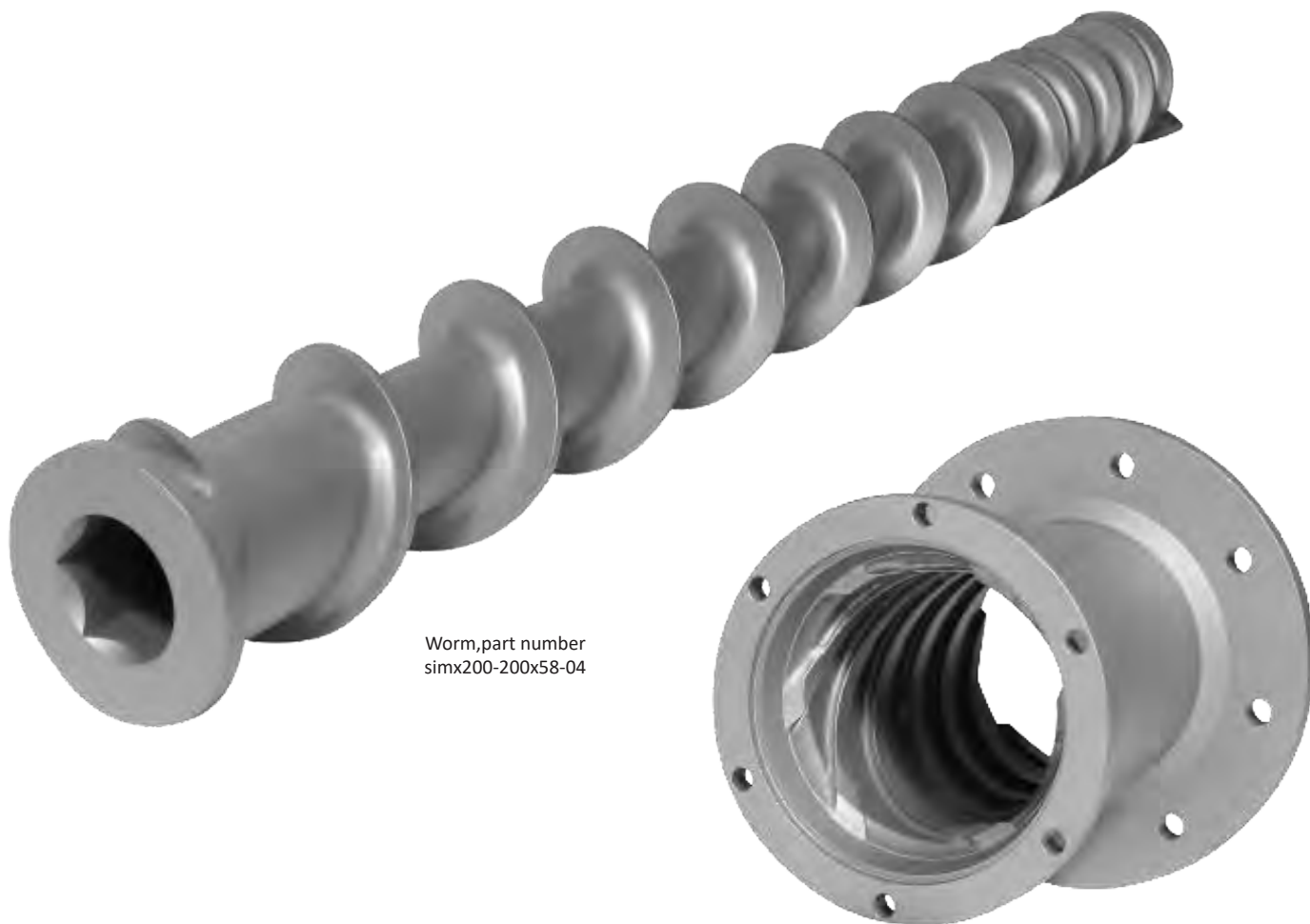
www.koncepttech.com

Koncept Tech ApS, Industrivej 6, DK-4200 Slagelse, Denmark, Phone: +45 70271410 E-mail: parts@koncepttech.com

All items, parts, and accessories listed on the website of Koncept Tech ApS, are manufactured by Koncept Tech ApS, or manufactured to Koncept Tech ApS, specifications. The names of the original equipment manufacturers referred to on this site, such as but not limited to: Camiltech®, Handtmann®, K&G®, Krämer + Grebe®, CFS®, GEA®, Karl Schnell®, KS®, Laska®, Palmia®, Petzmo®, Seydelmann®, Simo®, Haarslev®, Weiler®, Mincemaster®, ANCO®, Cozzini®, The Middleby Corporation®, Wollking®, Cornvair®, Auto®, Beehive®, Yeldmaster®, Meatmaker®, Poss®, Townsend®, Lima® etc., are all registered trademarks of their respective companies. All original equipment manufacturer's names are listed as Camiltech® type, Handtmann® type, K&G® type, Krämer + Grebe® type, CFS® type, Karl Schnell® type, KS® type, Laska® type, Palmia® type, Petzmo® type, Seydelmann® type, Simo® type, Haarslev® type, Weiler® type, Mincemaster® type, ANCO® type, Cozzini® type, Wollking® type, Cornvair® type, Auto® type, Beehive® type, Yeldmaster® type, Meatmaker® type, Poss® type, Townsend® type, Lima® type to indicate that these items are manufactured by Koncept Tech ApS, and not the original equipment manufacturers. Unless specifically stated otherwise, Koncept Tech ApS, has no association or affiliation with any entities/ companies listed.

Simo® Microcutter Parts

Machine Type	Description	Part Number
Simo® Microcutter MC200	Screw for worm pin, M16x50A2	sigr901-200x3511-97
Simo® Microcutter MC200	Teflon wear bush	sigh900-Simo200x50x40x50
Simo® Microcutter MC200	Worm pin type 200 Model 92	sigh900-Simo200x3511-104
Simo® Microcutter MC200	Distance ring 200x40	sigh900-Simo200x3509-146
Simo® Microcutter MC200	Hexagon bush type 46/60	sigh900-Simo200x3502-63
Simo® Microcutter MC200	Thrust block	sigh900-Simo200x3511-26
Simo® Microcutter MC200	Worm, model 92	simx200-200x58-04
Simo® Microcutter MC200	Lining	sigr220-200x3501-92
Simo® Microcutter MC200	Spring	sigh900-Simo200x3511-27
Simo® Microcutter MC200	Support bearing	sigh900-Simo200x3508-44



Worm, part number
simx200-200x58-04

Lining, part number
sigr220-200x3501-92

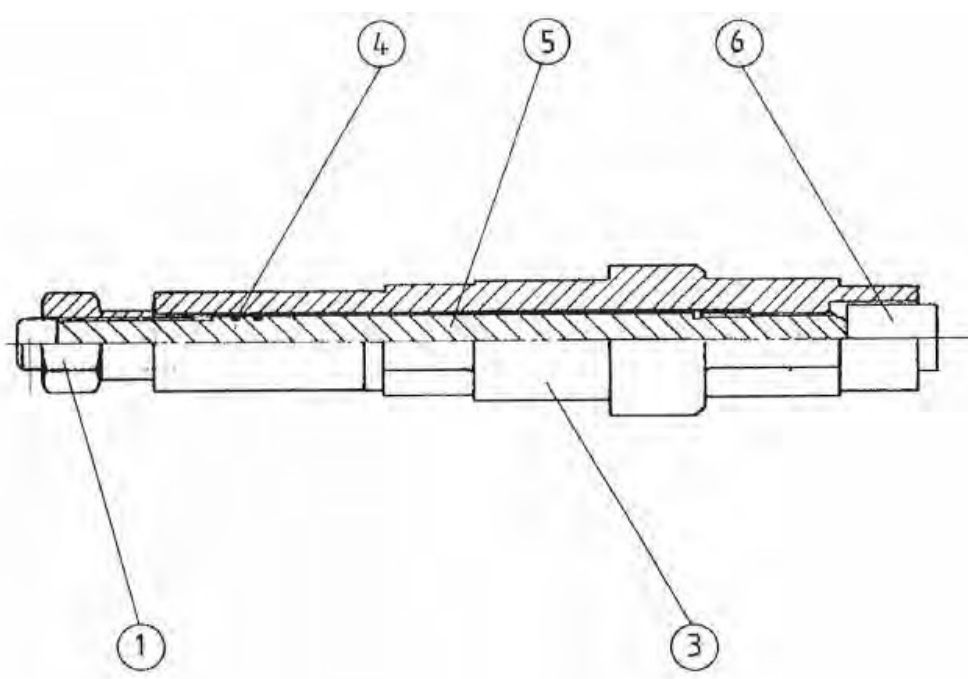
www.koncepttech.com

Koncept Tech ApS, Industrivej 6, DK-4200 Slagelse, Denmark, Phone: +45 70271410 E-mail: parts@koncepttech.com

All items, parts, and accessories listed on the website of Koncept Tech ApS, are manufactured by Koncept Tech ApS, or manufactured to Koncept Tech ApS, specifications. The names of the original equipment manufacturers referred to on this site, such as but not limited to: Camitech®, Handtmann®, K&G®, Krämer + Grebe®, CFS®, GEA®, Karl Schnell®, KS®, Laska®, Palmia®, Petsmo®, Seydelmann®, Simo®, Haarslev®, Weiler®, Mincemaster®, ANCO®, Cozzini®, The Middleby Corporation®, Wollking®, Comvair®, Auto®, Beehive®, Yeldmaster®, Meatmaker®, Poss®, Townsend®, Lima® etc., are all registered trademarks of their respective companies. All original equipment manufacturer's names are listed as Camitech® type, Handtmann® type, K&G® type, Krämer + Grebe® type, CFS® type, Karl Schnell® type, KS® type, Laska® type, Palmia® type, Petsmo® type, Seydelmann® type, Simo® type, Haarslev® type, Weiler® type, Mincemaster® type, ANCO® type, Cozzini® type, Wollking® type, Comvair® type, Auto® type, Beehive® type, Yeldmaster® type, Meatmaker® type, Poss® type, Townsend® type, Lima® type to indicate that these items are manufactured by Koncept Tech ApS, and not the original equipment manufacturers. Unless specifically stated otherwise, Koncept Tech ApS, has no association or affiliation with any entities/ companies listed.

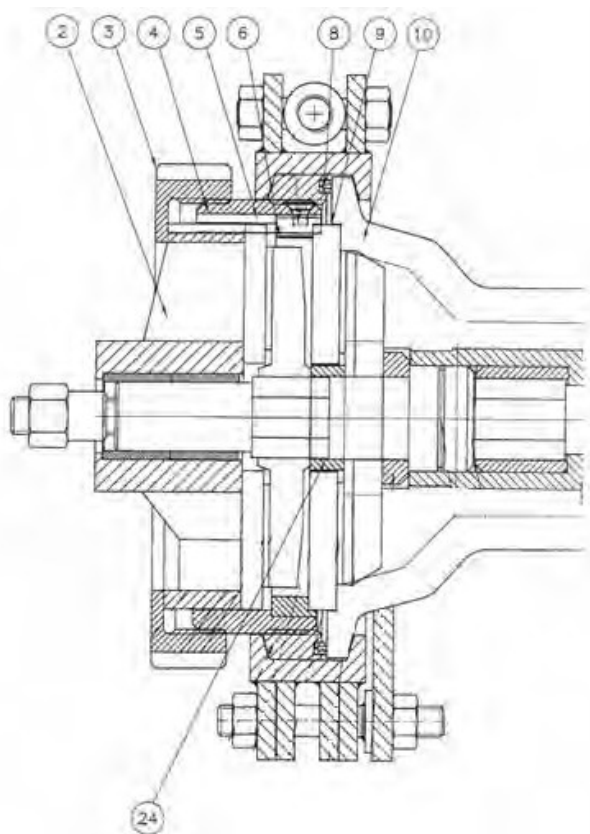
Simo® Microcutter Parts (Cont.)

Machine Type	Pos. No.	Description	Part Number
Simo® Microcutter MC250/115PFVB150		Worm pin, consisting of:	3511-102
Simo® Microcutter MC250/115PFVB150	1	Tightening nut	3511-101
Simo® Microcutter MC250/115PFVB150	3	Worm pin type 250/115 – long	3511-81
Simo® Microcutter MC250/115PFVB150	4	O-ring, NBR	Ø3xØ20
Simo® Microcutter MC250/115PFVB150	5	Tightening screw	3511-100
Simo® Microcutter MC250/115PFVB150	6	Thrust block	3511-20





Simo® Microcutter Parts (Cont.)


Machine Type	Pos. No.	Description	Part Number
Simo® Microcutter MC250/115PFVB150		Double knife set	
Simo® Microcutter MC250/115PFVB150	02	Support bearing type 250LD	3508-97
Simo® Microcutter MC250/115PFVB150	03	Screw cap, type 250	3503-30
Simo® Microcutter MC250/115PFVB150	04	Knife housing	3535-25
Simo® Microcutter MC250/115PFVB150	05	Key way	3535-18
Simo® Microcutter MC250/115PFVB150	06	Bone crushing ring	3505-26
Simo® Microcutter MC250/115PFVB150	08	Sealing for threaded ring	2511-30
Simo® Microcutter MC250/115PFVB150	09	Key way for lining	3501-71
Simo® Microcutter MC250/115PFVB150	10	Lining, type 250/Ø6" lining	3501-107
Simo® Microcutter MC250/115PFVB150	17	Throw off ring	3522-4
Simo® Microcutter MC250/115PFVB150	20	Main bearing, complete	2515-45
Simo® Microcutter MC250/115PFVB150	24	Spacer ring	3511-95
Simo® Microcutter MC250/115PFVB150	25	Threaded ring	3509-12
Simo® Microcutter MC250/115PFVB150	35	Spacer disc for bearing shaft	2505-32



Simo® Microcutter Parts (Cont.)

Machine Type	Description	Part Number
Simo® Microcutter MC250/300	Main bearing	2515-38 
Simo® Microcutter MC250/300	Worm Short	3502-160 
Simo® Microcutter MC250/300	Lining /125PF	3501-121 
Simo® Microcutter MC250/300	Lining steam injector	3501-00098
Simo® Microcutter MC250/300	Knife housing for bone ring, stainless steel	3505-25
Simo® Microcutter MC250/300	Wear ring Ø140	2511-00000075
Simo® Microcutter MC250/300	Throw off ring	3522-00004
Simo® Microcutter MC250/300	Pilot bearing	3508-97
Simo® Microcutter MC250/300	Bone crushing ring for knife housing	3505-26
Simo® Microcutter MC250/300	Slide bushing	scmm900-1500x2013-05-148K
Simo® Microcutter MC250/300	Planetary gear	313L313
Simo® Microcutter MC250/300	Oil hose	148M1-C-7
Simo® Microcutter MC250/300	Pressure switch	148M1-C-11
Simo® Microcutter MC250/300	New generation oil cooler unit	148M1-C-9
Simo® Microcutter MC250/300	Oil filter	scmc900-250x2013-04-148-M 3623-13-Fla50/9
Simo® Microcutter MC250/300	Solenoid valve	148-M-B1



Main bearing,
part number 2515-38 

www.koncepttech.com

Koncept Tech ApS, Industrivej 6, DK-4200 Slagelse, Denmark, Phone: +45 70271410 E-mail: parts@koncepttech.com

All items, parts, and accessories listed on the website of Koncept Tech ApS, are manufactured by Koncept Tech ApS, or manufactured to Koncept Tech ApS, specifications. The names of the original equipment manufacturers referred to on this site, such as but not limited to: Camiltech®, Handtmann®, K&G®, Krämer + Grebe®, CFS®, GEA®, Karl Schnell®, KS®, Laska®, Palmia®, Petsmo®, Seydelmann®, Simo®, Haarslev®, Weiler®, Mincemaster®, ANCO®, Cozzini®, The Middleby Corporation®, Wollking®, Comvair®, Auto®, Beehive®, Yeldmaster®, Meatmaker®, Poss®, Townsend®, Lima® etc., are all registered trademarks of their respective companies. All original equipment manufacturer's names are listed as Camiltech® type, Handtmann® type, K&G® type, Krämer + Grebe® type, CFS® type, Karl Schnell® type, KS® type, Laska® type, Palmia® type, Petsmo® type, Seydelmann® type, Simo® type, Haarslev® type, Weiler® type, Mincemaster® type, ANCO® type, Cozzini® type, Wollking® type, Comvair® type, Auto® type, Beehive® type, Yeldmaster® type, Meatmaker® type, Poss® type, Townsend® type, Lima® type to indicate that these items are manufactured by Koncept Tech ApS, and not the original equipment manufacturers. Unless specifically stated otherwise, Koncept Tech ApS, has no association or affiliation with any entities/ companies listed.



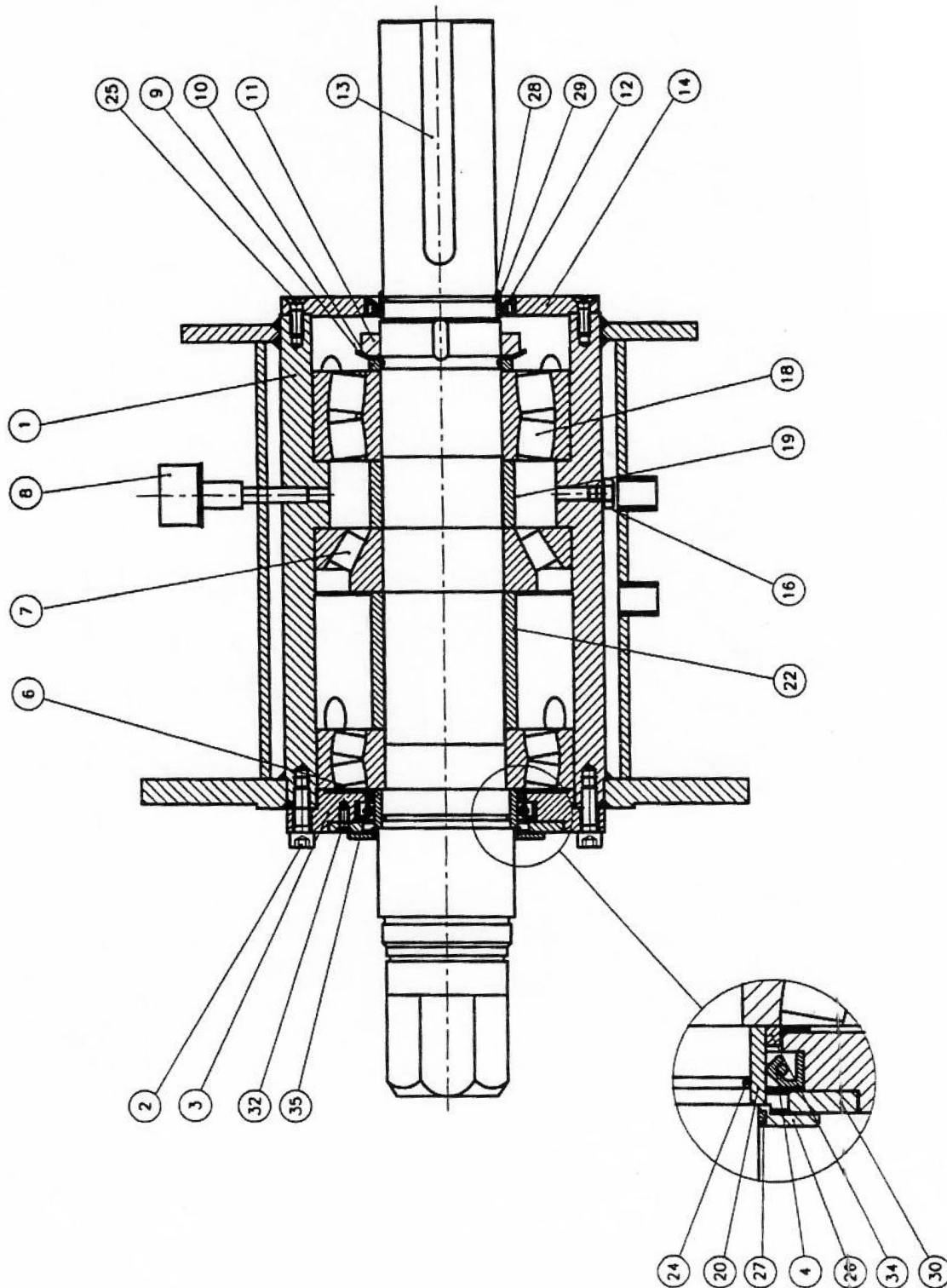
Follow us on LinkedIn



Follow us on Facebook

Simo® Microcutter Parts (Cont.)

Main Bearing for MC 250, Part Number 2515-58



*To see part list for MC 250 Main Bearing
please see page no. 31

www.koncepttech.com

Koncept Tech ApS, Industrivej 6, DK-4200 Slagelse, Denmark, Phone: +45 70271410 E-mail: parts@koncepttech.com

All items, parts, and accessories listed on the website of Koncept Tech ApS, are manufactured by Koncept Tech ApS, or manufactured to Koncept Tech ApS, specifications. The names of the original equipment manufacturers referred to on this site, such as but not limited to: Camitech®, Handtmann®, K&G®, Krämer + Grebe®, CFS®, GEA®, Karl Schnell®, KS®, Laska®, Palmia®, Petsmo®, Seydelmann®, Simo®, Haarslev®, Weiler®, Mincemaster®, ANCO®, Cozzini®, The Middleby Corporation®, Wolkling®, Comvair®, Auto®, Beehive®, Yeldmaster®, Meatmaker®, Poss®, Townsend®, Lima® etc., are all registered trademarks of their respective companies. All original equipment manufacturer's names are listed as Camitech® type, Handtmann® type, K&G® type, Krämer + Grebe® type, CFS® type, Karl Schnell® type, KS® type, Laska® type, Palmia® type, Petsmo® type, Seydelmann® type, Simo® type, Haarslev® type, Weiler® type, Mincemaster® type, ANCO® type, Cozzini® type, Wolkling® type, Comvair® type, Auto® type, Beehive® type, Yeldmaster® type, Meatmaker® type, Poss® type, Townsend® type, Lima® type to indicate that these items are manufactured by Koncept Tech ApS, and not the original equipment manufacturers. Unless specifically stated otherwise, Koncept Tech ApS, has no association or affiliation with any entities/ companies listed.

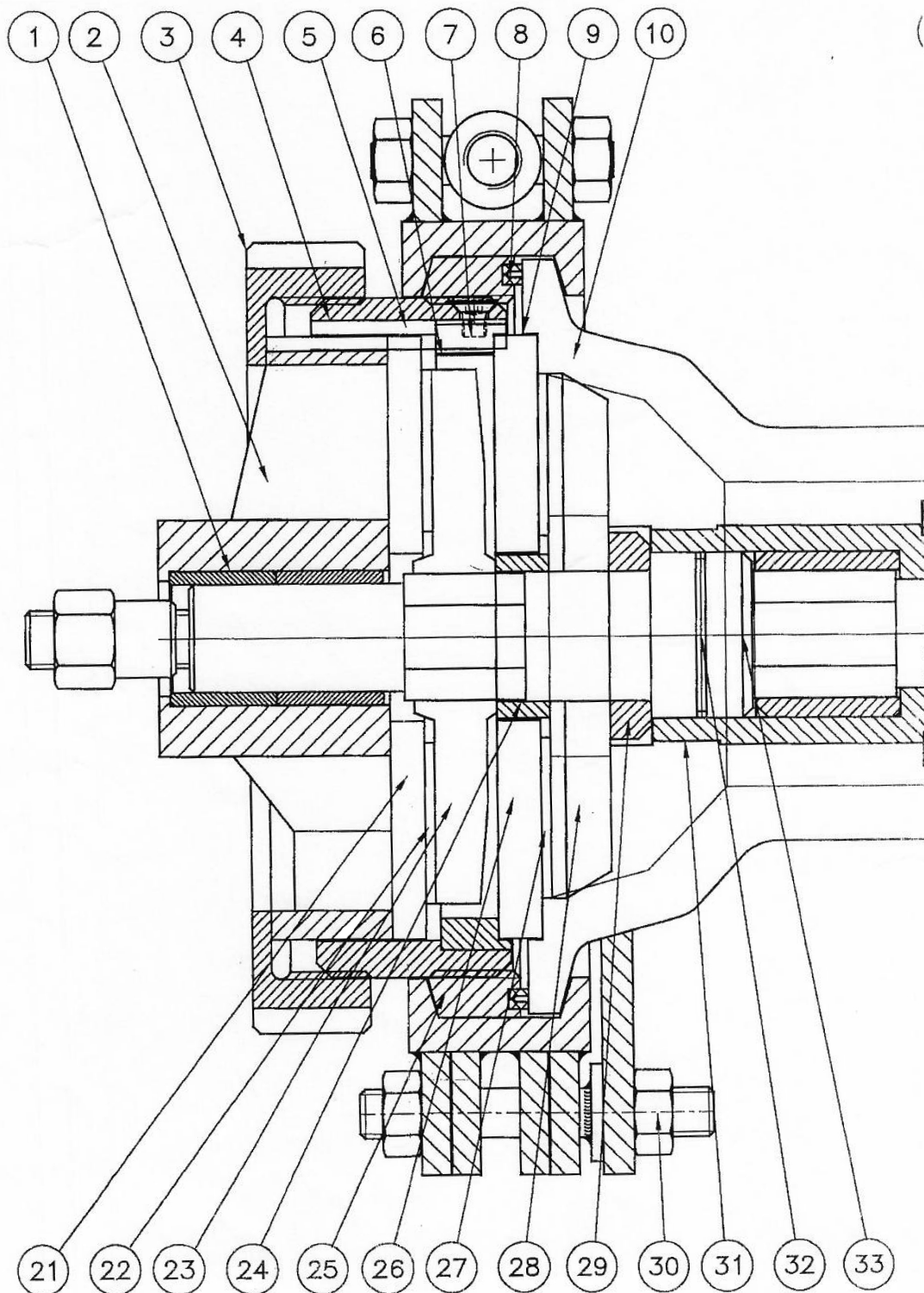
Simo® Microcutter Parts (Cont.)

Part List for Main Bearing for MC 250, Part Number 2515-58

Pos. No	Description	Quantity	Part number
1	Main bearing House	1	2515-56
2	Allen screw M10 x 30	6	5511-41
3	Bearing cap B34/Ø90	1	1221-30
4	Washer 95/120x12	1	6115-95120121
6	Bearing 21316	1	5810-21316
7	Bearing 21316	1	5810-21316
8	Air filter 3/8"	1	3623-14
9	Lock nut MB16	1	5559-7
10	Spacer ring 80/95x8	1	2515-18
11	Lock nut KM16	1	5559-6
12	Washer 80/100x10	1	6315-08010010
13	Key 20x12 L=160	1	7140-2012
14	Bearing cap	1	2506-10
16	Plug 3/8"	1	5715-6
17	Sight glass 3/8"	1	3614-38
18	Bearing 22316	1	5810-22316
19	Spacer ring	1	2507-4
20	Innerring 85/95x26	1	5910-859526

Simo® Microcutter Parts (Cont.)

Double Knife Set for MC 250



*To see part list for MC 250 Double Knife Set
please see page no. 33

www.koncepttech.com

Koncept Tech ApS, Industrivej 6, DK-4200 Slagelse, Denmark, Phone: +45 70271410 E-mail: parts@koncepttech.com

All items, parts, and accessories listed on the website of Koncept Tech ApS, are manufactured by Koncept Tech ApS, or manufactured to Koncept Tech ApS, specifications. The names of the original equipment manufacturers referred to on this site, such as but not limited to: Camitech®, Handtmann®, K&G®, Krämer + Grebe®, CFS®, GEA®, Karl Schnell®, KS®, Laska®, Palmia®, Petsmo®, Seydelmann®, Simo®, Haarslev®, Weiler®, Mincemaster®, ANCO®, Cozzini®, The Middleby Corporation®, Wollking®, Cornvair®, Auto®, Beehive®, Yeldmaster®, Meatmaker®, Poss®, Townsend®, Lima® etc., are all registered trademarks of their respective companies. All original equipment manufacturer's names are listed as Camitech® type, Handtmann® type, K&G® type, Krämer + Grebe® type, CFS® type, Karl Schnell® type, KS® type, Laska® type, Palmia® type, Petsmo® type, Seydelmann® type, Simo® type, Haarslev® type, Weiler® type, Mincemaster® type, ANCO® type, Cozzini® type, Wollking® type, Cornvair® type, Auto® type, Beehive® type, Yeldmaster® type, Meatmaker® type, Poss® type, Townsend® type, Lima® type to indicate that these items are manufactured by Koncept Tech ApS, and not the original equipment manufacturers. Unless specifically stated otherwise, Koncept Tech ApS, has no association or affiliation with any entities/companies listed.

Simo® Microcutter Parts (Cont.)

Part List for Double Knife Set for MC 250 (Part 1 of 2)

Pos. No	Description	Quantity	Part number
1	Bronze Slide Bearing	1	2503-15
2	Support Bearing Type 250LD	1	3508-97
3	Screw Cap Type 250	1	3505-30
4	Knife House Type 250	1	3505-25
5	Key-way	1	3505-18
6	Bone Crushing Ring	1	3505-26
7	UH Screw for Key-way	1	M10x40
8	Sealing f treaded lining L=937	1	2511-30
9	Key-way for Lining	1	3501-71
10	Lining Type 250/Ø6" Inlet	1	3501-107
11	O-ring Sealing	1	Ø4xØ145
12	Spacer Flange	1	3501-84
13	Bush for fitting of Seal	1	1221-32
16	Frame for AES Sealing	1	1221-22
17	Throw off ring	1	3522-4
18	O-ring for Throw off ring	1	Ø3Ø90
19	Ring for Cabinet Cover	1	1219-1
20	Main bearing Complete	1	2515-45
21	Hole Plate / Knife / Precutter	1	Size to be defined
22	Inserts Type 250	1	
23	Knifeholder Type 250 P1-&I	1	
24	Spacer Ring	1	3511-95
25	Threaded Ring	1	3509-12

Simo® Microcutter Parts (Cont.)

Part Lift for Double Knife Set for MC 250 (Part 2 of 2)

Pos. No	Description	Quantity	Part number
26	Hole Plate / Knife / Precutter	1	Size to be defined
27	Inserts Type 250	1	
28	Knifeholder Type 250 P1-&l	1	
29	Thrust Block	1	3511-32
30	Clamping Ring Type 250	1	3504-27
31	Feed Screw	1	3502-160
32	O-ring for Worm Pin	1	Ø3xØ63
33	Worm Pin for MC Type 250/115	1	3511-102
35	Spacer Disc for Bearing Shaft	1	2505-32
35A	Socket Head Screw	2	M6x16
37	Main Bearing Shaft	1	2515-47
38	UH Screw	4	M5x16

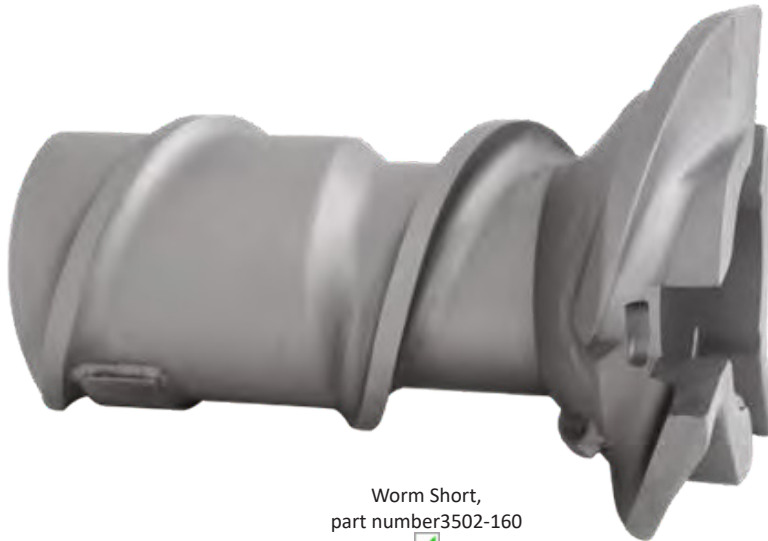


Follow us on LinkedIn



Follow us on Facebook

Simo® Microcutter Parts (Cont.)



Worm Short,
part number 3502-160



Lining,
part number 3501-121



www.koncepttech.com

Koncept Tech ApS, Industrivej 6, DK-4200 Slagelse, Denmark, Phone: +45 70271410 E-mail: parts@koncepttech.com

All items, parts, and accessories listed on the website of Koncept Tech ApS, are manufactured by Koncept Tech ApS, or manufactured to Koncept Tech ApS, specifications. The names of the original equipment manufacturers referred to on this site, such as but not limited to: Camitech®, Handtmann®, K&G®, Krämer + Grebe®, CFS®, GEA®, Karl Schnell®, KS®, Laska®, Palmia®, Petsmo®, Seydelmann®, Simo®, Haarslev®, Weiler®, Mincemaster®, ANCO®, Cozzini®, The Middleby Corporation®, Wolkling®, Comvair®, Auto®, Beehive®, Yeldmaster®, Meatmaker®, Poss®, Townsend®, Lima® etc., are all registered trademarks of their respective companies. All original equipment manufacturer's names are listed as Camitech® type, Handtmann® type, K&G® type, Krämer + Grebe® type, CFS® type, Karl Schnell® type, KS® type, Laska® type, Palmia® type, Petsmo® type, Seydelmann® type, Simo® type, Haarslev® type, Weiler® type, Mincemaster® type, ANCO® type, Cozzini® type, Wolkling® type, Comvair® type, Auto® type, Beehive® type, Yeldmaster® type, Meatmaker® type, Poss® type, Townsend® type, Lima® type to indicate that these items are manufactured by Koncept Tech ApS, and not the original equipment manufacturers. Unless specifically stated otherwise, Koncept Tech ApS, has no association or affiliation with any entities/ companies listed.



Follow us on LinkedIn



Follow us on Facebook

Wolfgang® / CFS® / GEA® Type Recoscreen - Mechanical Deboning Machine

Parts Available for Mechanical Deboning Machine Types:

RecoScreen(Deboner):

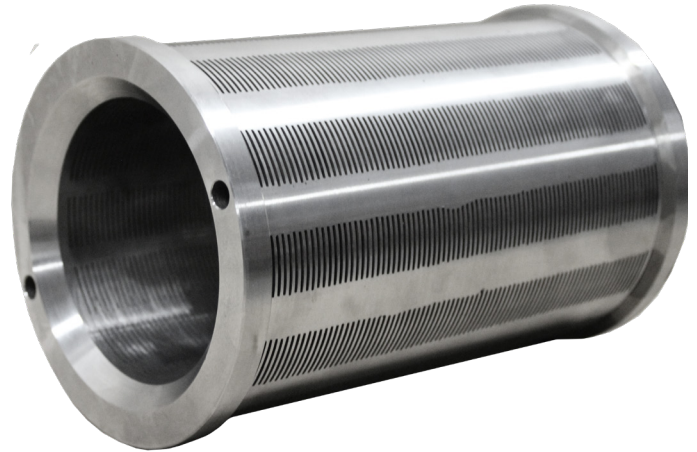
Type RS 100 and Type RS150

FilterTypes:

<u>Slit Filter</u>	<u>Hole Filter</u>
0.4 /0.25mm	3.00mm
1.5mm	3.25mm
1.1mm	4.00mm
0.8mm	5.25mm

OtherParts:

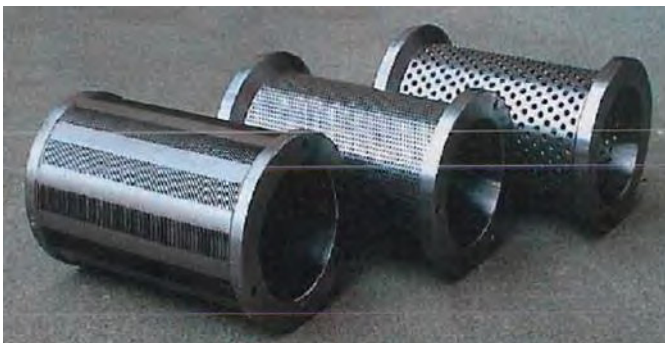
Screw Cone



Slit filter for RecoScreen

Pumps:

Type DC 200 (see pump section for details) Type DC 250
(see pump section for details)



Slit and hole filter for RecoScreen



Worm for RecoScreen

www.koncepttech.com



Koncept Tech ApS, Industrivej 6, DK-4200 Slagelse, Denmark, Phone: +45 70271410 E-mail: parts@koncepttech.com

All items, parts, and accessories listed on the website of Koncept Tech ApS, are manufactured by Koncept Tech ApS, or manufactured to Koncept Tech ApS, specifications. The names of the original equipment manufacturers referred to on this site, such as but not limited to: Camiltech®, Handtmann®, K&G®, Krämer + Grebe®, CFS®, GEA®, Karl Schnell®, KS®, Laska®, Palmia®, Petsmo®, Seydelmann®, Simo®, Haarslev®, Weiler®, Mincemaster®, ANCO®, Cozzini®, The Middleby Corporation®, Wolfgang®, Comvair®, Auto®, Beehive®, Yieldmaster®, Meatmaker®, Poss®, Townsend®, Lima® etc., are all registered trademarks of their respective companies. All original equipment manufacturer's names are listed as Camiltech® type, Handtmann® type, K&G® type, Krämer + Grebe® type, CFS® type, Karl Schnell® type, KS® type, Laska® type, Palmia® type, Petsmo® type, Seydelmann® type, Simo® type, Haarslev® type, Weiler® type, Mincemaster® type, ANCO® type, Cozzini® type, Wolfgang® type, Comvair® type, Auto® type, Beehive® type, Yieldmaster® type, Meatmaker® type, Poss® type, Townsend® type, Lima® type to indicate that these items are manufactured by Koncept Tech ApS, and not the original equipment manufacturers. Unless specifically stated otherwise, Koncept Tech ApS, has no association or affiliation with any entities/ companies listed.

Wolfling® / CFS® / GEA® Type Recoscreen - Mechanical Deboning Machine (Cont.)

Machine Type	Description	Part Number
CFS® RecoScreen 100	Front bearing housing	1402-15

Machine Type	Description	Part Number
CFS® RecoScreen 100	Slit filter 0.4	1402-235
CFS® RecoScreen 100	Slit filter 0.25-0.4	1402-191
CFS® RecoScreen 100	Slit filter 0.5	1402-197
CFS® RecoScreen 100	Slit filter 0.4-0.5	1402-190
CFS® RecoScreen 100	Slit filter 0.5-0.65	1402-313
CFS® RecoScreen 100	Slit filter 0.25-0.5	1402-248
CFS® RecoScreen 100	Hole filter Ø1.2	1402-247
CFS® RecoScreen 100	Hole filter Ø2-3	1402-246
CFS® RecoScreen 100	Hole filter Ø2-0	1402-59
CFS® RecoScreen 100	Hole filter Ø3.0	1402-60
CFS® RecoScreen 100	Hole filter Ø4.0	1402-61
CFS® RecoScreen 100	Worm/Auger single flight	1402-276
CFS® RecoScreen 100	Worm/Auger three flight	1402-197

Machine Type	Description	Part Number
CFS® RecoScreen 150	Slit filter 0.25-0.4	1402-193 
CFS® RecoScreen 150	Slit filter 0.25-0.5	1402-192
CFS® RecoScreen 150	Slit filter 0.7-0.5	1402-201
CFS® RecoScreen 150	Slit filter 0.5	1402-198
CFS® RecoScreen 150	Slit filter 0.6	1402-243
CFS® RecoScreen 150	Slit filter 0.8	1402-187
CFS® RecoScreen 150	Slit filter 0.9	1402-250
CFS® RecoScreen 150	Slit filter 1.0-3.0	1402-297
CFS® RecoScreen 150	Hole filter Ø2-0	1402-209
CFS® RecoScreen 150	Worm/Auger single flight	1402-300
CFS® RecoScreen 150	Worm/Auger single flight	1402-255
CFS® RecoScreen 150	Worm/Auger three flight	1402-270
CFS® RecoScreen 150	Worm/Auger three flight	1402-193 
CFS® RecoScreen 150	Set with filter and worm/auger	405169



Follow us on LinkedIn



Follow us on Facebook

Koncept Tech

Parts Portal

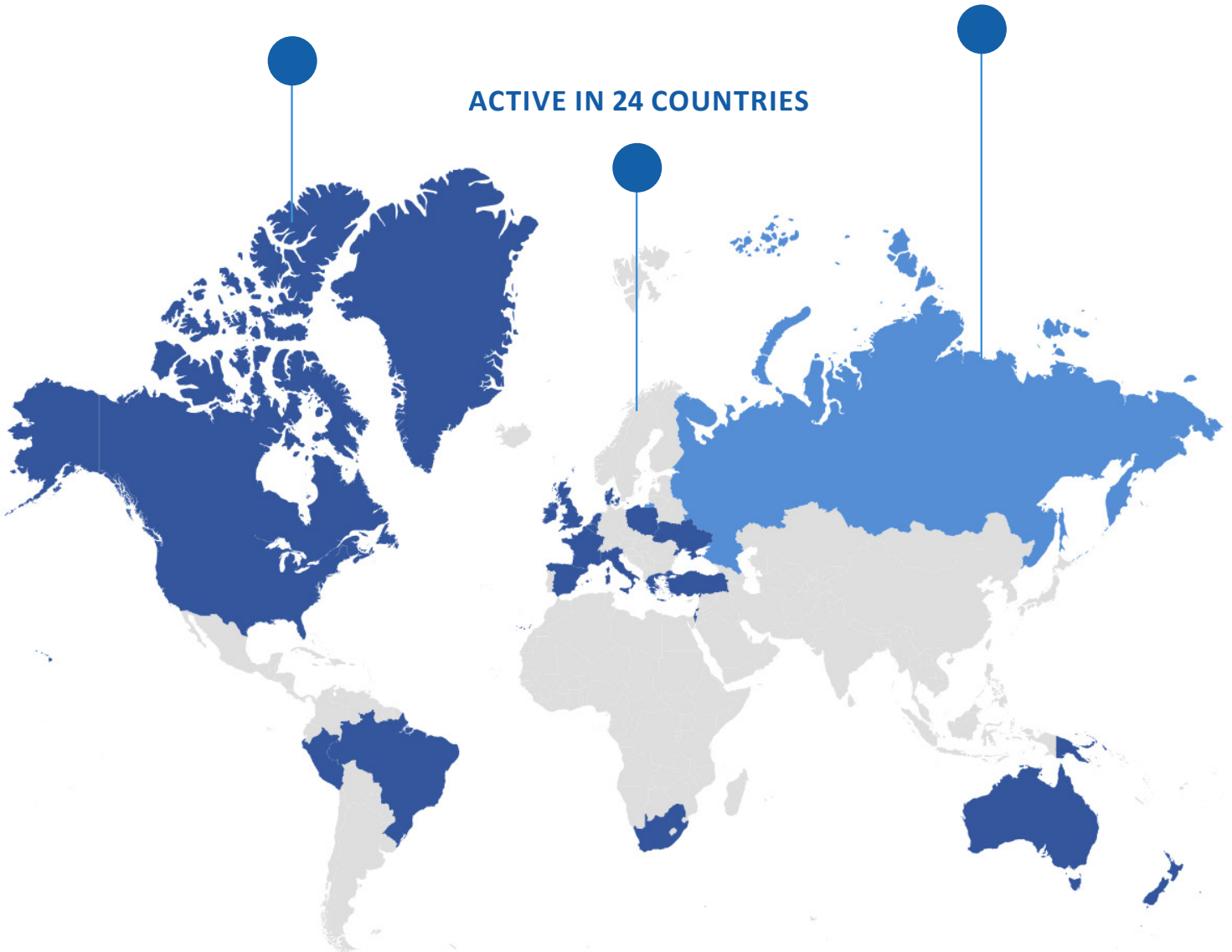
Our Agents and Distributors

Highlighted blue areas show geographic location of Koncept Tech agents and distributors

13 AGENTS & DISTRIBUTORS

SPREAD OVER 6 CONTINENTS

ACTIVE IN 24 COUNTRIES



Scan the QR

Find your local
Koncept Tech contact

www.koncepttech.com

Koncept Tech ApS, Industrivej 6, DK-4200 Slagelse, Denmark, Phone: +45 70271410 E-mail: parts@koncepttech.com

All items, parts, and accessories listed on the website of Koncept Tech ApS, are manufactured by Koncept Tech ApS, or manufactured to Koncept Tech ApS, specifications. The names of the original equipment manufacturers referred to on this site, such as but not limited to: Camitech®, Handtmann®, K&G®, Krämer + Grebe®, CFS®, GEÄ®, Karl Schnell®, KS®, Laska®, Palmia®, Petsmo®, Seydelmann®, Simo®, Haarslev®, Weiler®, Mincemaster®, ANCO®, Cozzini®, The Middleby Corporation®, Wolkling®, Comvair®, Auto®, Beehive®, Yeldmaster®, Meatmaker®, Poss®, Townsend®, Lima® etc., are all registered trademarks of their respective companies. All original equipment manufacturer's names are listed as Camitech® type, Handtmann® type, K&G® type, Krämer + Grebe® type, CFS® type, Karl Schnell® type, KS® type, Laska® type, Palmia® type, Petsmo® type, Seydelmann® type, Simo® type, Haarslev® type, Weiler® type, Mincemaster® type, ANCO® type, Cozzini® type, Wolkling® type, Comvair® type, Auto® type, Beehive® type, Yeldmaster® type, Meatmaker® type, Poss® type, Townsend® type, Lima® type to indicate that these items are manufactured by Koncept Tech ApS, and not the original equipment manufacturers. Unless specifically stated otherwise, Koncept Tech ApS, has no association or affiliation with any entities/ companies listed.



Follow us on LinkedIn



Follow us on Facebook

Koncept Tech

Parts Portal



Contact us today!



Helle Friis Olsen
Sales and Global Agent Support
Mobile: +45 2128 9785



Maria Ravnskjær
Sales and Global Agent Support
Mobile: +45 2917 1424

www.koncepttech.com

Koncept Tech ApS, Industrivej 6, DK-4200 Slagelse, Denmark, Phone: +45 70271410 E-mail: parts@koncepttech.com

All items, parts, and accessories listed on the website of Koncept Tech ApS, are manufactured by Koncept Tech ApS, or manufactured to Koncept Tech ApS, specifications. The names of the original equipment manufacturers referred to on this site, such as but not limited to: Camitech®, Handtmann®, K&G®, Krämer + Grebe®, CFS®, GEA®, Karl Schnell®, KS®, Laska®, Palmia®, Petsmo®, Seydelmann®, Simo®, Haarslev®, Weiler®, Mincemaster®, ANCO®, Cozzini®, The Middleby Corporation®, Wolkling®, Comvair®, Auto®, Beehive®, Yeldmaster®, Meatmaker®, Poss®, Townsend®, Lima®, etc., are all registered trademarks of their respective companies. All original equipment manufacturer's names are listed as Camitech® type, Handtmann® type, K&G® type, Krämer + Grebe® type, CFS® type, Karl Schnell® type, KS® type, Laska® type, Palmia® type, Petsmo® type, Seydelmann® type, Simo® type, Haarslev® type, Weiler® type, Mincemaster® type, ANCO® type, Cozzini® type, Wolkling® type, Comvair® type, Auto® type, Beehive® type, Yeldmaster® type, Meatmaker® type, Poss® type, Townsend® type, Lima® type to indicate that these items are manufactured by Koncept Tech ApS, and not the original equipment manufacturers. Unless specifically stated otherwise, Koncept Tech ApS, has no association or affiliation with any entities/ companies listed.

Koncept Tech ApS Member of scansteel foodtech Group

Koncept Tech ApS member of scansteel foodtech group



10,450 m² factory in Denmark

Headquarters of:

- **Koncept Tech ApS**
- **scansteel foodtech A/S**

www.koncepttech.com

Koncept Tech ApS, Industrivej 6, DK-4200 Slagelse, Denmark, Phone: +45 70271410 E-mail: parts@koncepttech.com

All items, parts, and accessories listed on the website of Koncept Tech ApS, are manufactured by Koncept Tech ApS, or manufactured to Koncept Tech ApS, specifications. The names of the original equipment manufacturers referred to on this site, such as but not limited to: Camiltech®, Handtmann®, K&G®, Krämer + Grebe®, CFS®, GEA®, Karl Schnell®, KS®, Laska®, Palmia®, Petsmo®, Seydelmann®, Simo®, Haarslev®, Weiler®, Mincemaster®, ANCO®, Cozzini®, The Middleby Corporation®, Wolkling®, Comvair®, Auto®, Beehive®, Yeldmaster®, Meatmaker®, Poss®, Townsend®, Lima® etc., are all registered trademarks of their respective companies. All original equipment manufacturer's names are listed as Camiltech® type, Handtmann® type, K&G® type, Krämer + Grebe® type, CFS® type, Karl Schnell® type, KS® type, Laska® type, Palmia® type, Petsmo® type, Seydelmann® type, Simo® type, Haarslev® type, Weiler® type, Mincemaster® type, ANCO® type, Cozzini® type, Wolkling® type, Comvair® type, Auto® type, Beehive® type, Yeldmaster® type, Meatmaker® type, Poss® type, Townsend® type, Lima® type to indicate that these items are manufactured by Koncept Tech ApS, and not the original equipment manufacturers. Unless specifically stated otherwise, Koncept Tech ApS, has no association or affiliation with any entities/ companies listed.